



**Allen Gears**



**Lufkin Gears**

# Power-transmission solutions for industrial applications

Copyright 2021 Baker Hughes Company. This material contains one or more registered trademarks of Baker Hughes Company and its subsidiaries in one or more countries. All third-party product and company names are trademarks of their respective holders.

**Baker Hughes** 

# Oil and gas applications



## References

8,000+



## Products

- Epicyclic
- Low speed
- High speed



## Segments

- Compressors
- Steam/gas turbines
- Diesel generators, expanders, pumps, FD/ID fans



## Power range

0.5–100 MW



## Weight

2–30 tons



# Power applications



## References

4,000+



## Products

- Epicyclic
- Low speed
- High speed



## Segments

- Steam/gas turbines
- Diesel generators expanders, pumps, FD/ID fans



## Power range

0.5–100 MW



## Weight

2–30 tons





# Cement applications



## References

300+



## Products

- Single, double, and triple-stage parallel shaft
- Epicyclic
- Split torque



## Segments

- Pulverizers grinding—ball mills, high-pressure grinder
- Kiln drives



## Power range

0.3–3 MW



## Weight

5–60 tons



# Mining applications



## References

600+



## Products

- Single, double, and triple-stage parallel shaft
- Epicyclic



## Segments

- Crushing-pulverizers
- Grinding, ball mills
- SAG mills, kiln drives



## Power range

0.3–3 MW



## Weight

5–60 tons



# Rubber/tire applications



## References

400+



## Products

- Single, double, and triple-stage parallel shaft
- Multiple-output shafts



## Segments

- Calendars, mills, mixers, pin-barrel extruders



## Power range

0.3–3 MW



## Weight

5–40 tons





# Plastics applications



## References

900+



## Products

- Single, double, and triple-stage parallel shaft
- Multiple-output shafts



## Segments

- Mixers
- Melt pumps
- Extruders/pelletizers



## Power range

0.3–3 MW



## Weight

5–40 tons



# Metal applications



## References

2,000+



## Products

- Single, double, and triple-stage parallel shaft
- Multiple-output shafts



## Segments

- Rolling mills
- Winders/rewinders, z mills



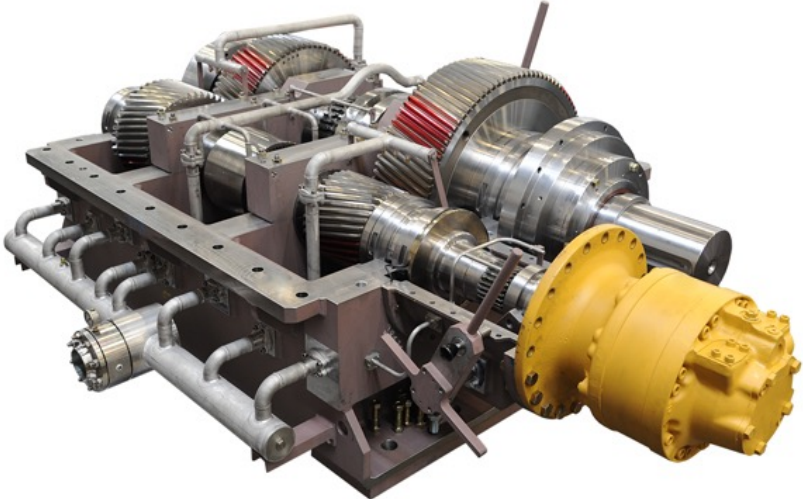
## Power range

0.3–5 MW



## Weight

5–60 tons





# Sugar applications



## References

700+



## Products

- Single, double, triple, and quad-stage parallel shaft
- Epicyclic
- Split torque



## Segments

- Cane knife, crushers, mills , diffusers



## Power range

0.5–2 MW



## Weight

3–60 tons



# Marine bluewater applications

For medium and high-speed diesels, steam and gas turbine, electric motor drives



## References

1,300+



## Products

- Single, two-stage, and compound gears for fixed-pitch and controllable-pitch wheels
- Parallel shaft
- Epicyclic



## Segments

- Large yachts, high-speed ferries
- Offshore supply vessels
- Articulating tug barges (ATB), ship-assist tugs, dredges



## Power range

1–30 MW



## Weight

3–50 tons





# Marine brownwater applications

For medium and low-speed diesels, and electric motor drives



**References** 2,000+



**Products**

- Single, two stage, and compound gears for fixed-pitch and controllable-pitch wheels
- Parallel shaft
- Eepicyclic



**Segments**

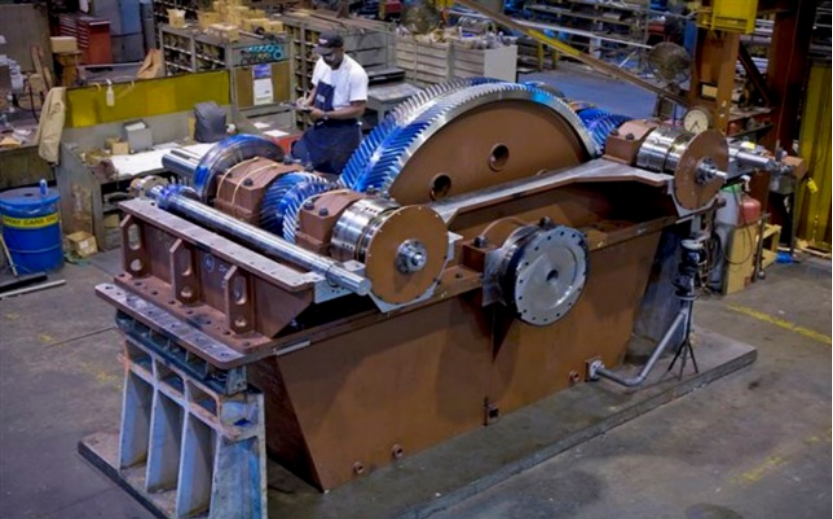
- Workboats/pushboats
- Tugs, ferries, bulk carriers, dredges, cutter heads



**Power range** 1–15 MW



**Weight** 3–40 tons





# Marine military applications

For medium and high-speed diesels, steam and gas turbine, and electric-motor drives



## References

1,300+



## Products

- Single, two-stage, and compound gears for fixed-pitch, controllable-pitch, and water jets
- Parallel shaft, bevel, and epicyclic



## Segments

- Surface vessels, offshore patrol craft
- Midshore patrol vessels
- Frigates, cutters, hovercraft



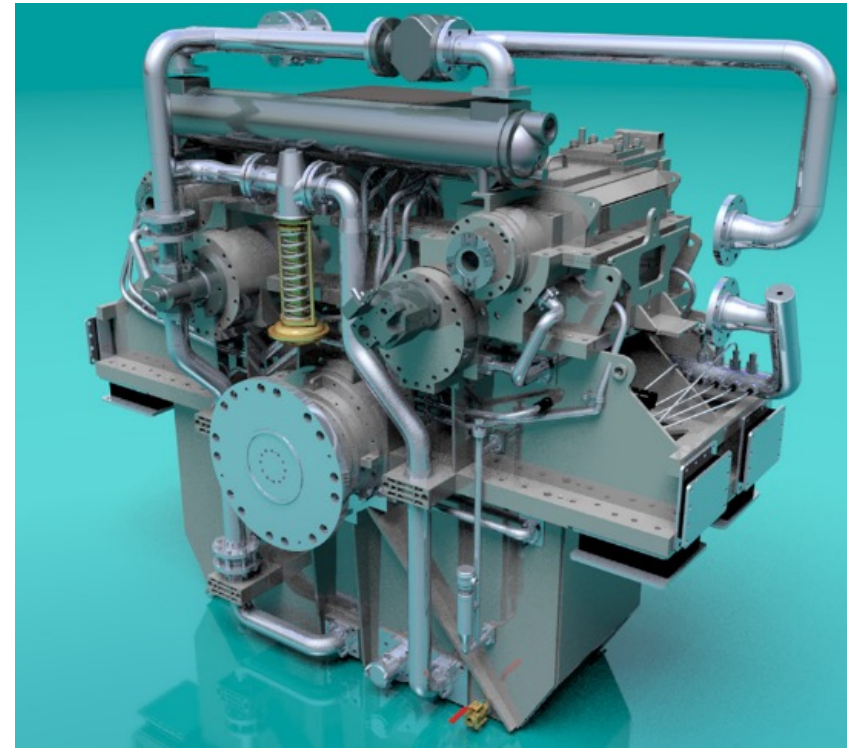
## Power range

1–30 MW



## Weight

3–50 tons



# Chemical and process applications



## References

2,000+



## Products

- Single and double-stage parallel shaft
- Epicyclic



## Segments

- Compressors, pumps, fans, blowers, expanders, extruders, and mixers



## Power range

0.5–60 MW



## Weight

2–30 tons



# Hydro applications



## References

400+



## Products

- Single and double-stage parallel shaft
- Epicyclic



## Segments

- Hydropower generators, tidal power, flood control, desalination plants



## Power range

0.3–20 MW



## Weight

2–40 tons







**Allen Gears**

a Baker Hughes business



**Lufkin Gears**

a Baker Hughes business