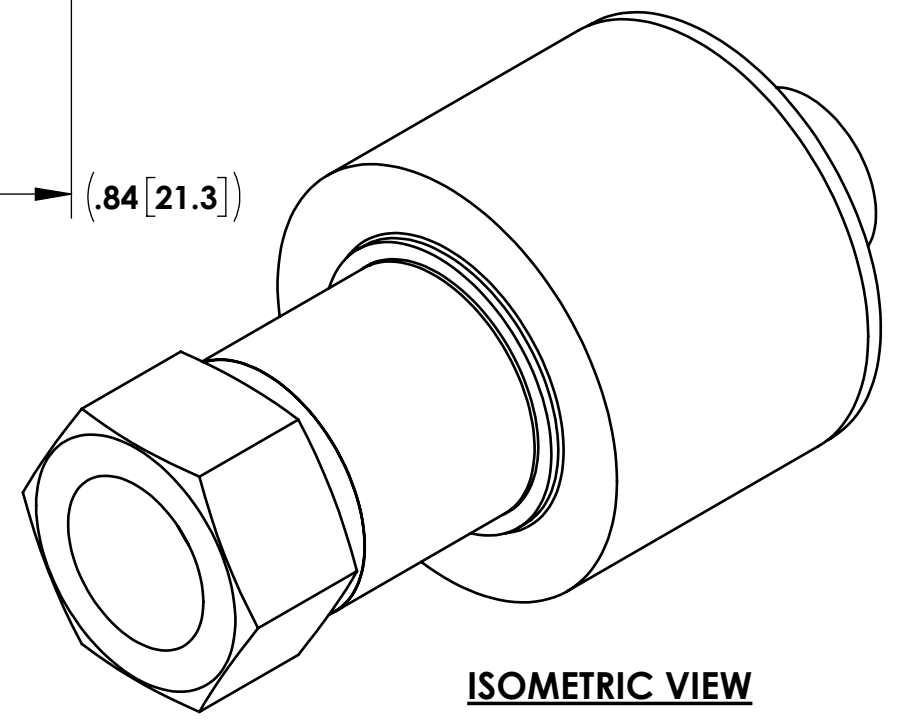
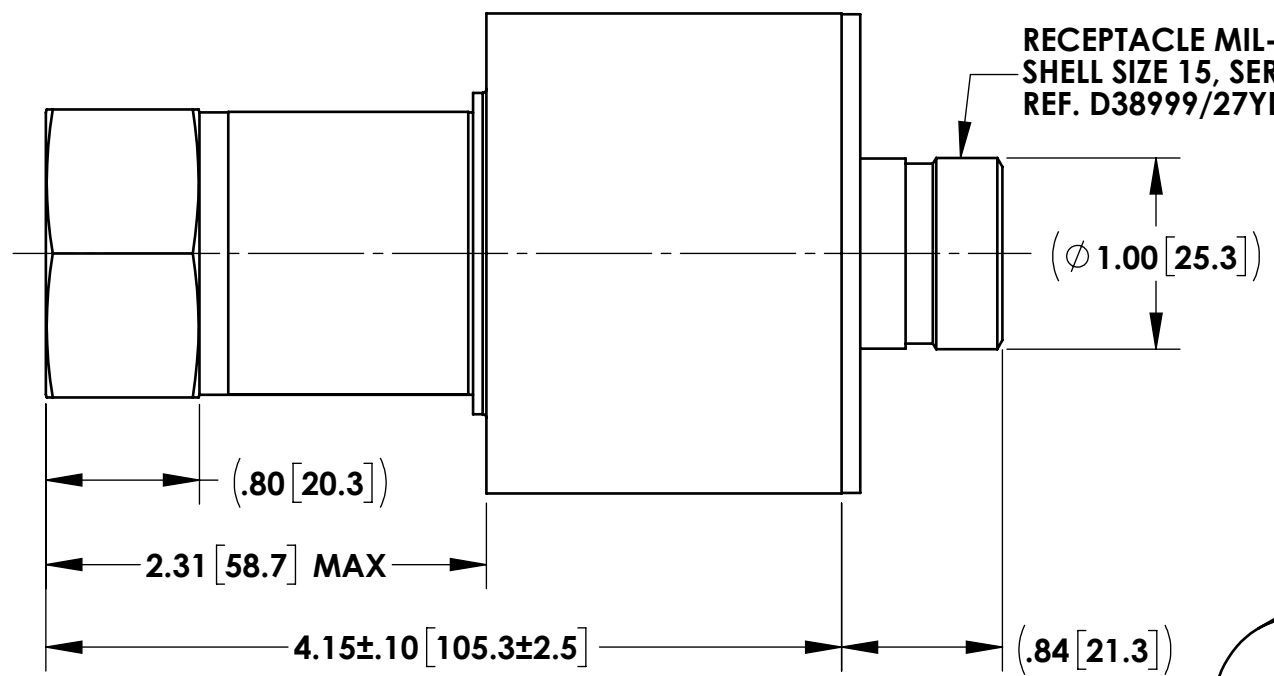
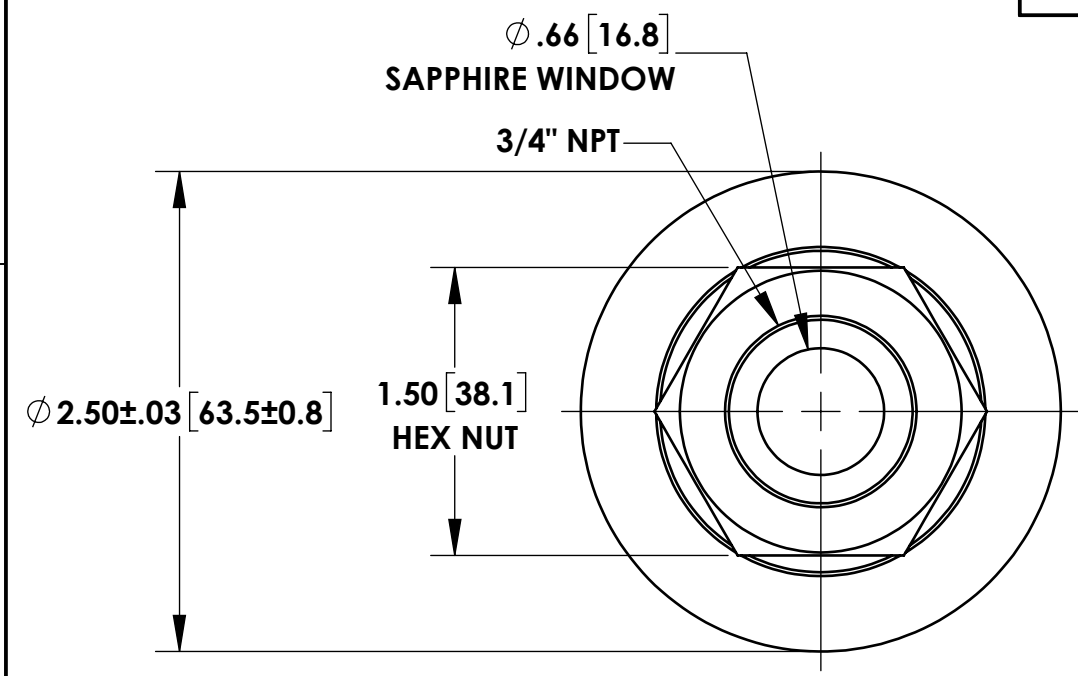


THIS IS A RELATED DRAWING.  
THIS DRAWING SHALL NOT BE MODIFIED  
WITHOUT THE CONSENT OF THE AUTHORIZED  
PERSON AS DEFINED IN SOP-295.

REVISIONS			
REV.	DESCRIPTION	RESPONSIBLE ENGINEER	DATE PREPARED
W	500000417770	B. BETSCHMAN	9/1/2021
Y	500000502312	B. BETSCHMAN	6/27/2023



- NOTES:
- DIMENSIONS ARE: INCHES [MILLIMETERS]
  - PERFORMANCE REQUIREMENTS:
    - INDUSTRIAL CONTROL EQUIPMENT FOR USE IN HAZARDOUS LOCATIONS (NORMALLY NONARCING COMPONENT).
    - RATING: CLASS I, DIVISION 2, GROUPS A, B, C & D, T3\*  
CLASS I, GROUP II, ZONE 2, ATEX CATEGORY 3
  - \*WHEN AMBIENT OPERATING TEMP IS OVER 150°C, A WATER COOLING COIL, REUTER-STOKES SP-566, IS TO BE USED. WHEN USING WATER COOLING, THE FLAME SENSOR CAN BE OPERATED TO A MAX. AMBIENT TEMP OF 235°C.
  - MATING CABLE: REUTER-STOKES RS-E2-0285.
  - REFERENCE OPERATION & MAINTENANCE MANUAL FS-9001OM.
  - REFERENCE FS-9001-54 FOR PART MARKING.



CONNECTOR LEGEND	
PIN	CIRCUIT DESIGNATION
A	-
B	+
C	GROUND
ONLY 3 PINS USED	

LIST OF MATERIAL OR PARTS			
CONFORMS TO ASME Y14.5M-1994 STDS UNLESS OTHERWISE SPECIFIED DIMENSIONAL TOLERANCES:		APPLIED PRACTICES SOP-121.4	
.X DECIMAL ± .1 .XXX ± .005	RESPONSIBLE ENGINEER/CREATION DATE		
.XX DECIMAL ± .01 .XXXX ± .0005	D. SCHNEIDER 05/23/96		
ANGULAR ± 2° SURFACE FINISH 125√	QA APPROVED		
FILLET CHAMFER	N/A		
DIMENSIONS ARE IN INCHES		INITIAL ECN	
MATERIAL		N/A	
300 SERIES S.S.		THIRD ANGLE PROJECTION	
SIZE B	DWG NO RS-FS-9001	REV Y	
SCALE 1:1	THIS DOCUMENT CONTAINS PROPERTIES DIRECTLY LINKED INTO THE SAP SYSTEM		SHEET 1 OF 1

