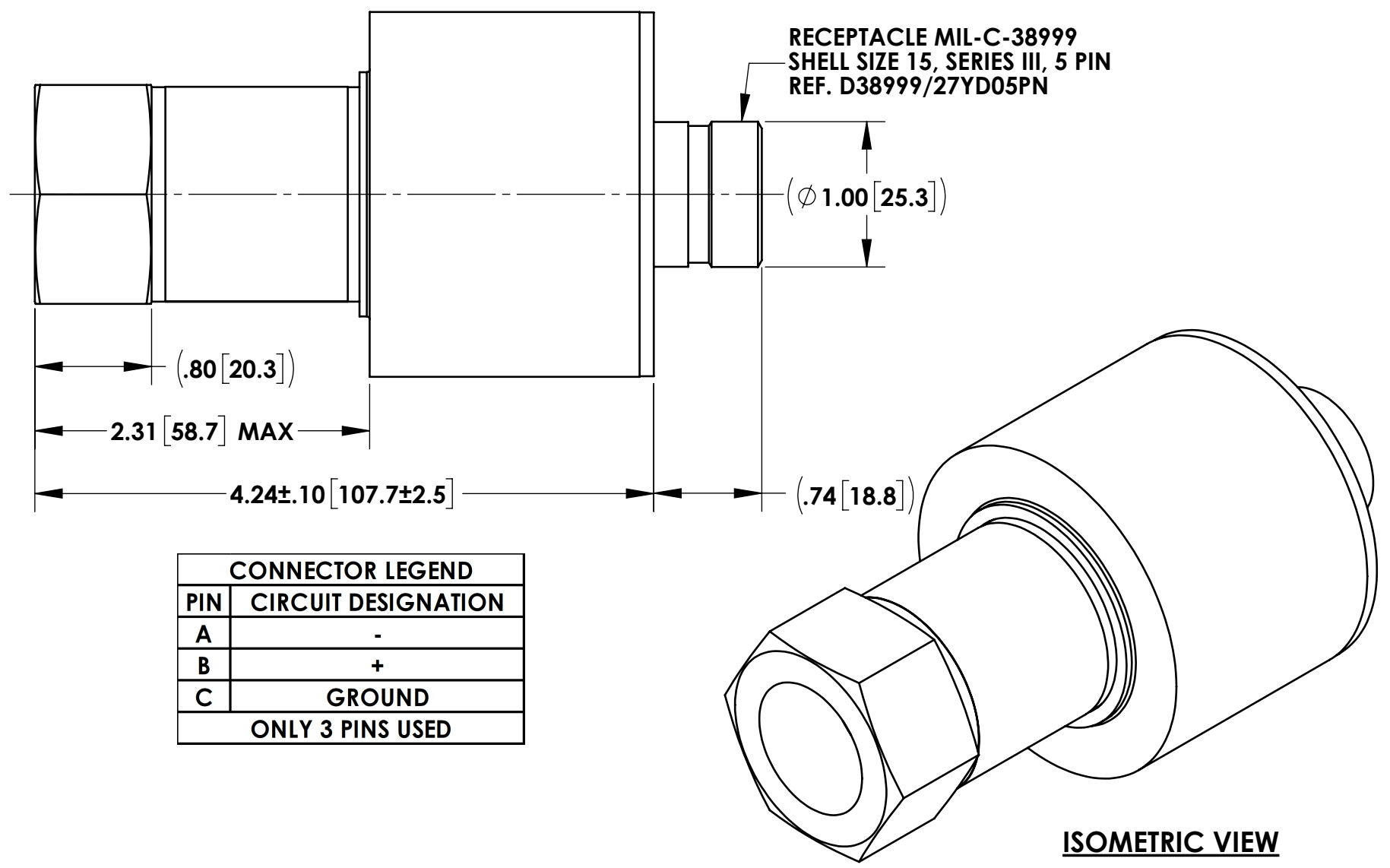
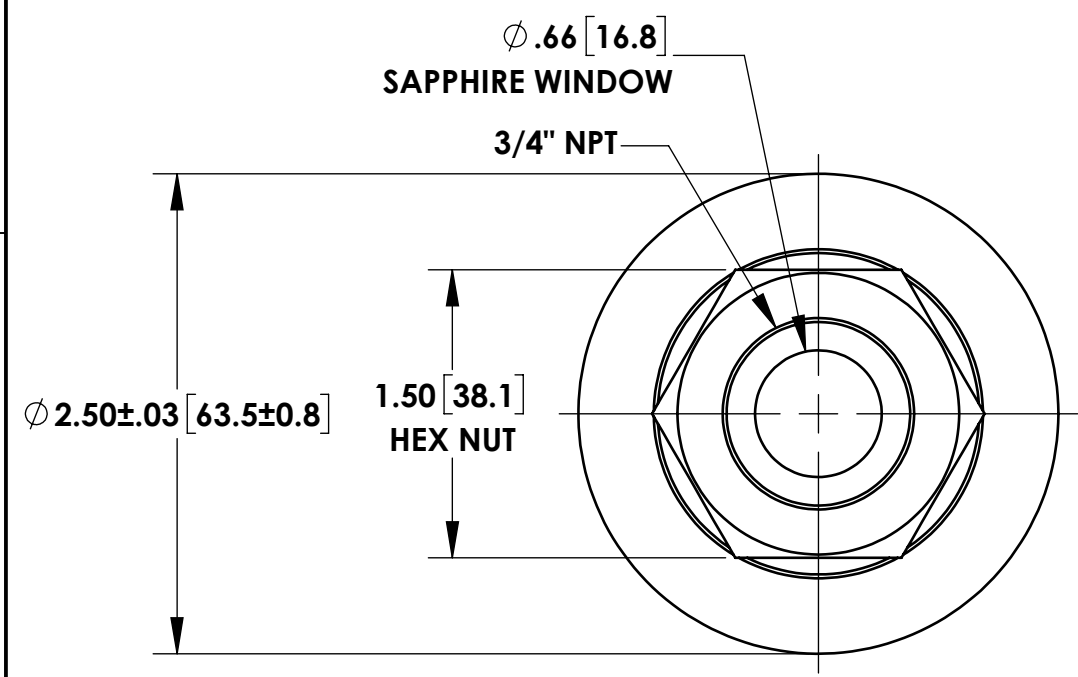


THIS IS A RELATED DRAWING.
THIS DRAWING SHALL NOT BE MODIFIED
WITHOUT THE CONSENT OF THE AUTHORIZED
PERSON AS DEFINED IN SOP-295.

REVISIONS			
REV.	DESCRIPTION	RESPONSIBLE ENGINEER	DATE PREPARED
J	ECN 500000157848	J. HASHMI	12/22/2015
K	ECN 500000338394	T. HAZELTON	8/6/2019
L	ECN 500000346190	J.HASHMI	10/23/2019
M	ECN 500000365087	D. SCHREINER	05/04/2020



CONNECTOR LEGEND	
PIN	CIRCUIT DESIGNATION
A	-
B	+
C	GROUND
ONLY 3 PINS USED	

- NOTES:
- DIMENSIONS ARE: INCHES [MILLIMETERS]
 - PERFORMANCE REQUIREMENTS:
 - INDUSTRIAL CONTROL EQUIPMENT FOR USE IN HAZARDOUS LOCATIONS (INTRINSICALLY SAFE).
 - RATING: CLASS 1, DIVISION 1, GROUP C & D, T*
CLASS 1, GROUP II, ZONE 0, ATEX CATEGORY 1
 - CE 2575 Ex II 1 G
Ex ia IIB T3...T2 Ga

 - AMBIENT TEMPERATURE RANGE:
-40°C ≤ Ta ≤ 150°C; T3
*-40°C ≤ Ta ≤ 200°C; T2; COOLING COIL REQUIRED
 - ATEX & ETL LISTED; CE MARKED.
 - MAX. VOLTAGE: 30 VDC.
 - *WHEN AMBIENT OPERATING TEMP IS OVER 150°C, A WATER COOLING COIL, REUTER-STOKES SP-566, IS TO BE USED. WHEN USING WATER COOLING, THE FLAME SENSOR CAN BE OPERATED TO A MAX. AMBIENT TEMP OF 235°C.
 - MATING CABLE: REUTER-STOKES RS-E2-0285 IS NOT INCLUDED.
 - REFERENCE CONTROLLING DRAWING FS-9004-IWD & OPERATION & MAINTENANCE MANUAL FS-9004OM.

LIST OF MATERIAL OR PARTS			
CONFORMS TO ASME Y14.5M-1994 STDS UNLESS OTHERWISE SPECIFIED DIMENSIONAL TOLERANCES:		APPLIED PRACTICES SOP-121.4	
.X DECIMAL ±.1 .XXX ±.005	RESPONSIBLE ENGINEER/CREATION DATE	Reuter-Stokes Twinsburg, Ohio 44087 REUTER-STOKES PROPRIETARY, UNCONTROLLED WHEN PRINTED OR TRANSMITTED ELECTRONICALLY.	
.XX DECIMAL ±.01 .XXXX ±.0005	C. SLABAUGH 12/31/98	FLAME SENSOR (UV)	
ANGULAR ± 2° SURFACE FINISH 125√	QA APPROVED	SIZE	DWG NO
FILLET CHAMFER	N/A	B	RS-FS-9004
DIMENSIONS ARE IN INCHES		SCALE	REV
MATERIAL	N/A	1:1	M
300 SERIES S.S.	THIRD ANGLE PROJECTION	THIS DOCUMENT CONTAINS PROPERTIES DIRECTLY LINKED INTO THE SAP SYSTEM	
		SHEET 1 OF 1	