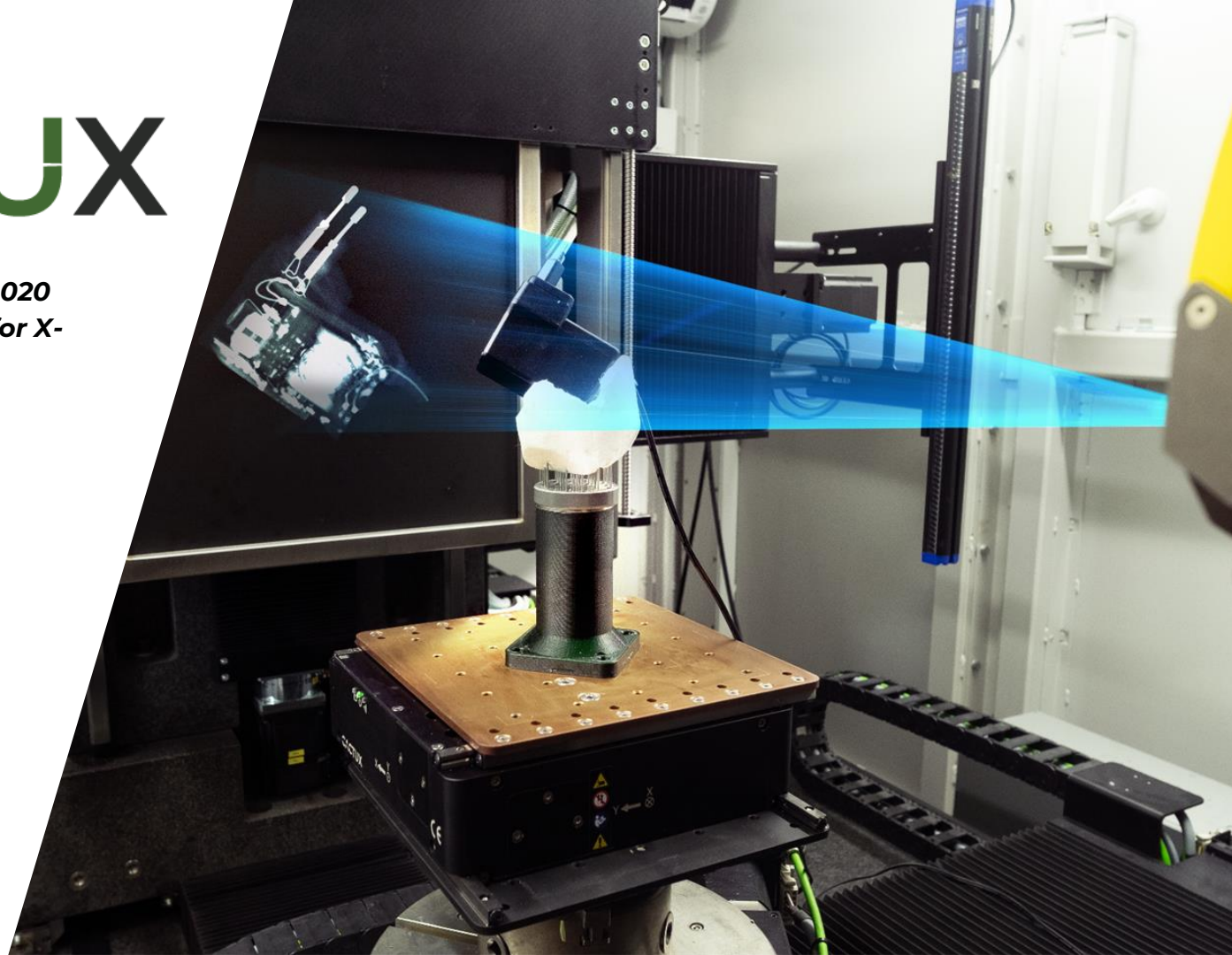


CACTUX

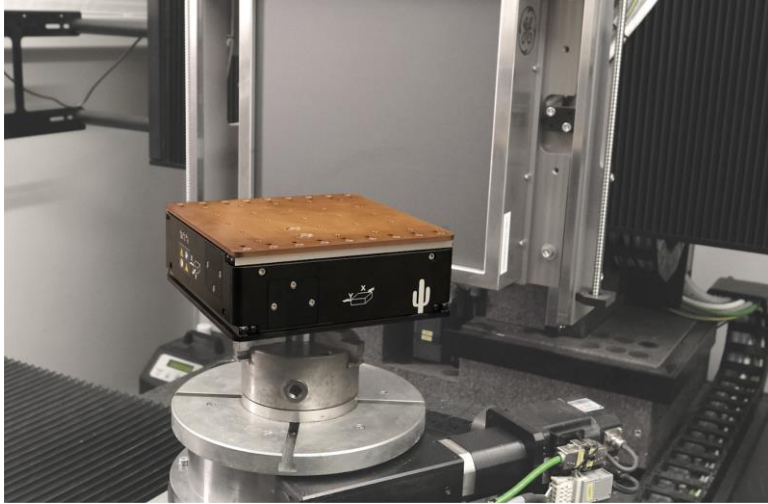
*Technological company est. 2020
developing SMART solutions for X-
ray technologies.*

Follow us!





Our goal is to to be an **innovation-driven company** developing and providing **beyond state-of-the-art technologies worldwide.**



We are technological company

We develop SMART solutions for X-ray NDT technologies

We cooperate with global leaders

10

Team members

3

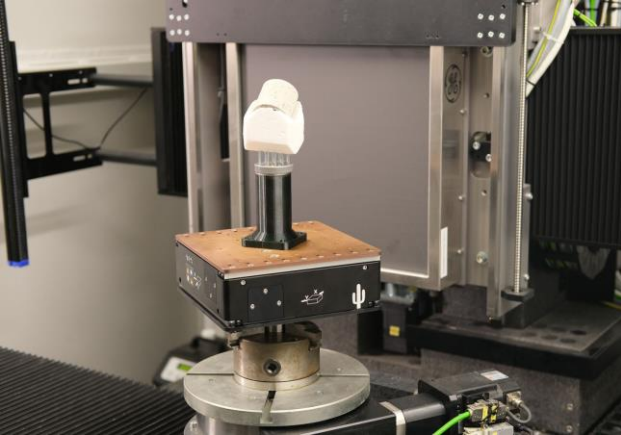
Advisory Board members

OUR PRODUCTS

CACTUX

*Enhancing the **quality** and **efficiency** of X-ray NDT analysis*

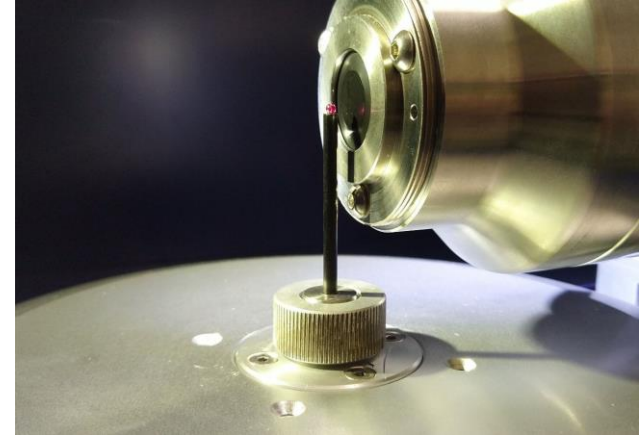
AUTOMATIC SAMPLE MANIPULATION



IN-SITU REAL-LIFE CONDITION SIMULATION



QUALITY AND PRECISION ENHANCEMENT

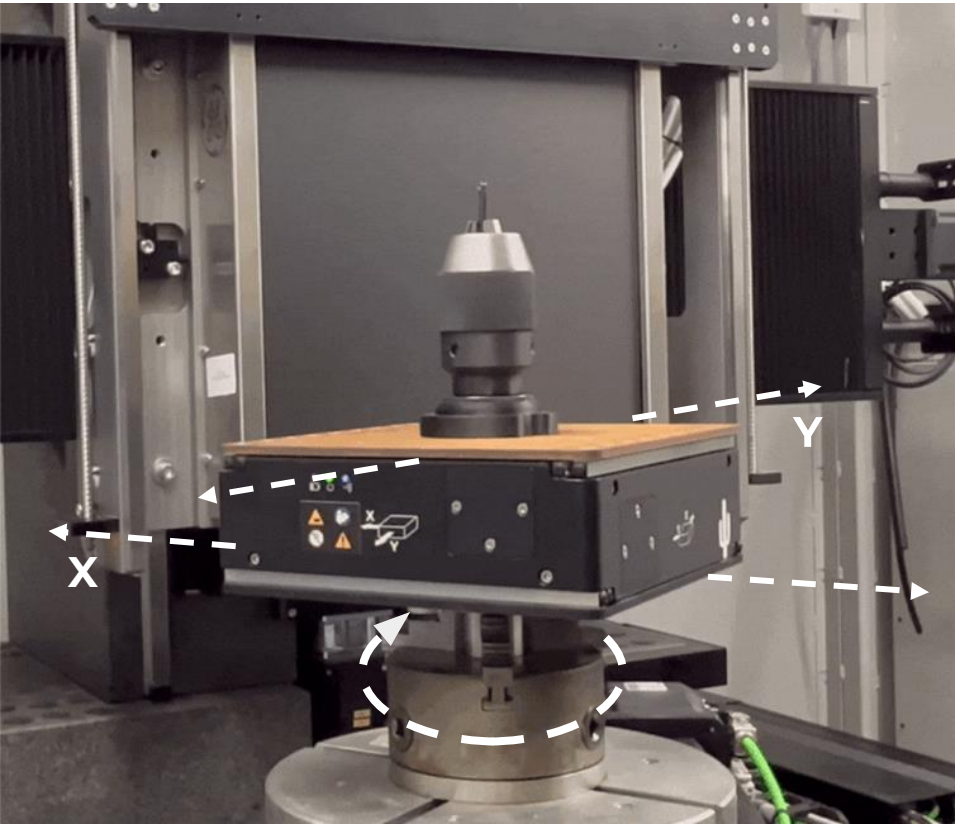




Sample centering was ineffective due to manual workflow:

1. Turning off the X-ray source
2. Opening the door
3. Moving the sample manually
4. Closing the door
5. Turning on the X-ray source

SaguaroX
effective sample centring
0.5
working hour saved per day



MOTORIZED TRANSLATION STAGES

Saguarox

- Two axis translation
- Wireless communication
- Battery powered

IMPACT

→ **For internal quality control**
up to **33%** increase in scanning capacity

→ **20% decrease in service costs**

SAMPLE MANIPULATION: SAGUAROX LINE

CACTUX



quick
mounting



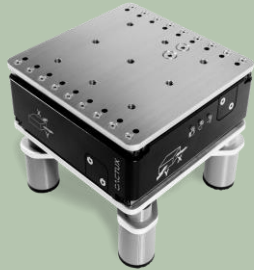
fine
centering



wireless for
360° rotation



SMART
positioning



Saguarox S

- smaller size
- diminished load capacity
- for more compact CT



Saguarox M

- for any sample of up to 15 kg



Saguarox M Heavy

- enhanced load capacity up to 30 kg
- for heavy samples

For V-tomex S and M:



SaguaroX S

- smaller size
- diminished load capacity
- for more compact CT

For V-tomex M and L:



SaguaroX M

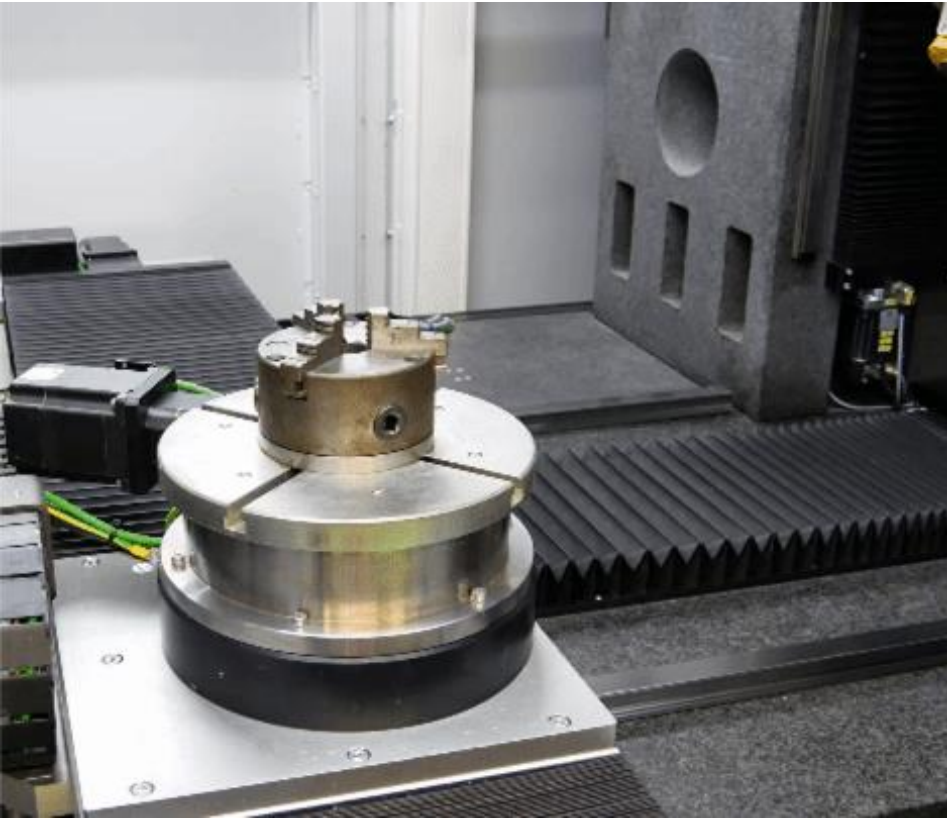
- for any sample of up to 15 kg
- Baker Hughes Confidential

For V-tomex L:



SaguaroX M Heavy

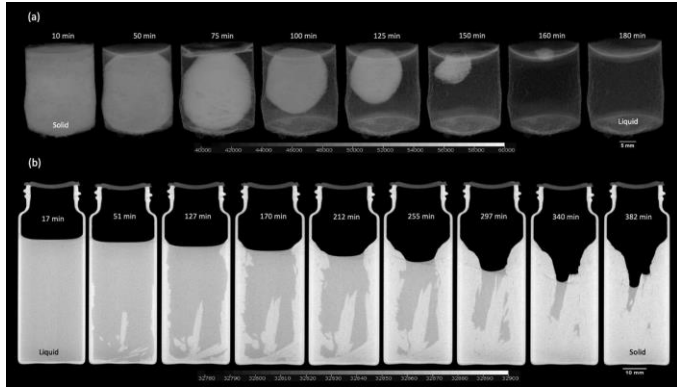
- enhanced load capacity up to 30 kg
- for heavy samples



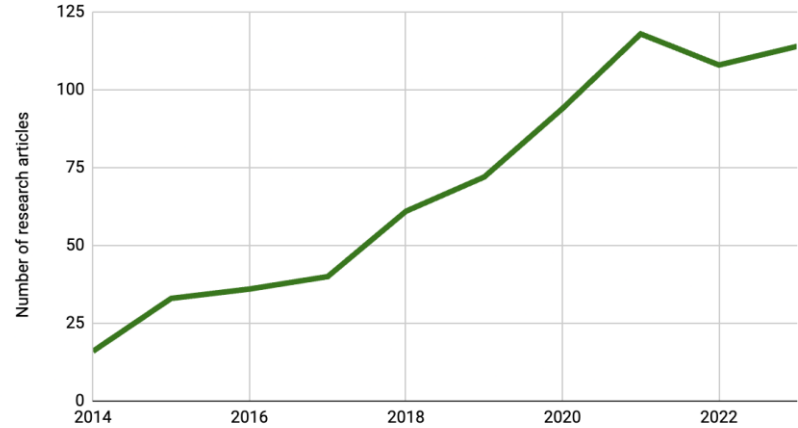
Up and running in less than 15 min.

- 1. Mandrel is attached to Saguarox**
- 2. Saguarox is placed in the chuck and fasten**
- 3. Arizona software is installed**

Evolution of PCM sample during melting (top) and solidification (bottom)*



Number of research articles with keywords: In-situ, X-ray Computed Tomography

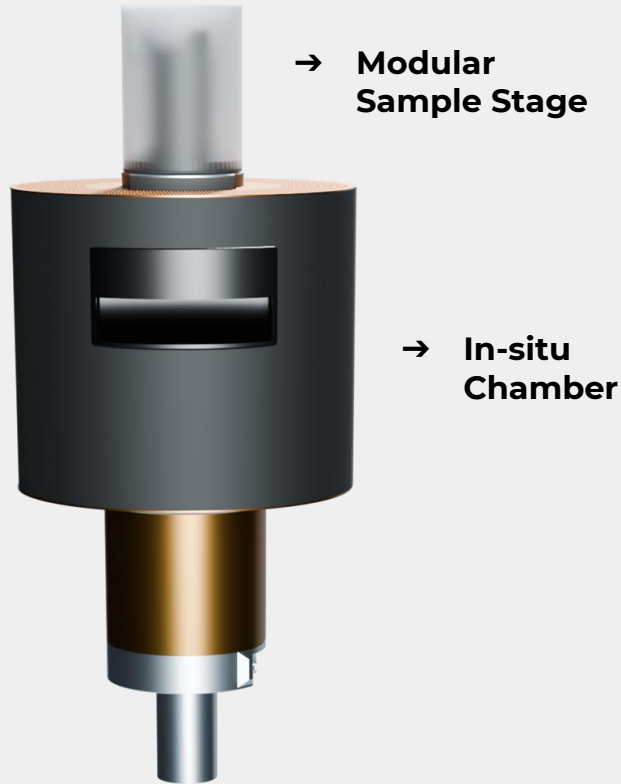


More accurate information about samples internal structure behaviour:

1. Simulation of life-cycle
2. Simulation of environment conditions

for CT systems
→ expansion of capabilities

for users
→ more data



In-situ BOX

- Climate control **-30 to +60°C**
- Power supply option **230V**
- Modular Sample Stages for
Thermal testing
Battery testing
Electronics testing

For V-tomex M and L



Thermal BOX

- for the study of the temperature effect on the samples
- -30°C to 60°C climate control



Battery BOX

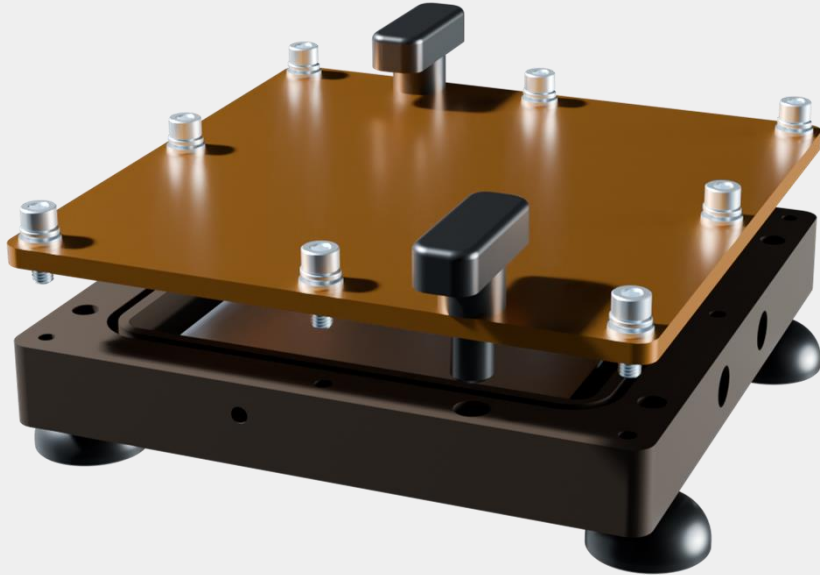
- for simulation of battery lifecycle
- electrochemical cycling + climate control



Electro BOX

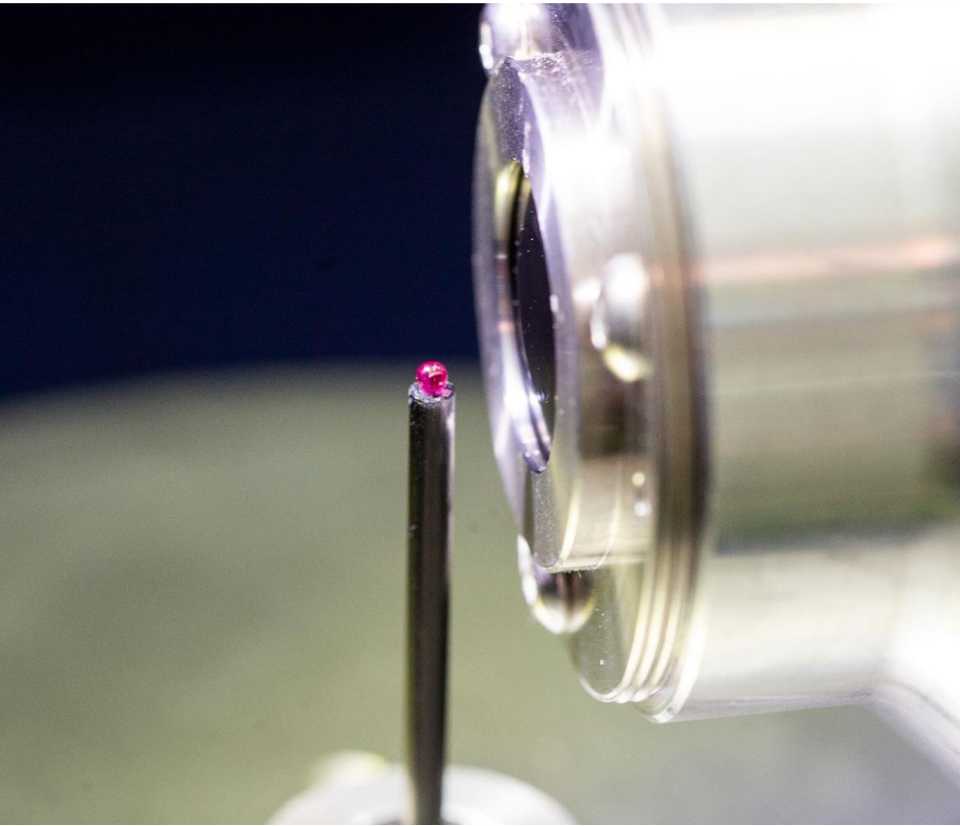
- for simulation of space conditions for electronics
- power supply + climate control

For Micronex, Nanomex, V-tomex



In-situ soldering PLATFORM

- For Radiography
- Heating up to **400°C**
- Simulation of soldering process for **Testing quality of solder joints**
- Analysing route cause of void formation**
- Understanding thermo-mechanical behaviour of soldering**



Calibration Phantoms

- for **voxel-size calibration**
- for **spatial resolution calculation**
- for **manipulator inaccuracies correction**

IMPACT

- **For higher quality results**
published results: **1.5%** improvement in data accuracy

For Nanotom**Voxel-Spirit**

→ for quick and intuitive voxel size calibration

**Resolution-Spirit**

→ precise spatial resolution estimation according to ASTM E1695-95 standard

**R1-Shadow**

→ correction of rotational stage inaccuracies and CT data registration

CACTUX

*Technological company est. 2020
developing SMART solutions for X-ray
technologies.*

sales@cactux.cz

CactuX s.r.o.

*Hlavní 104 C
66431 Lelekovice
Czech Republic*

Follow us!

