

Enhancing efficiency for industrial CT inspections through automated sample handling

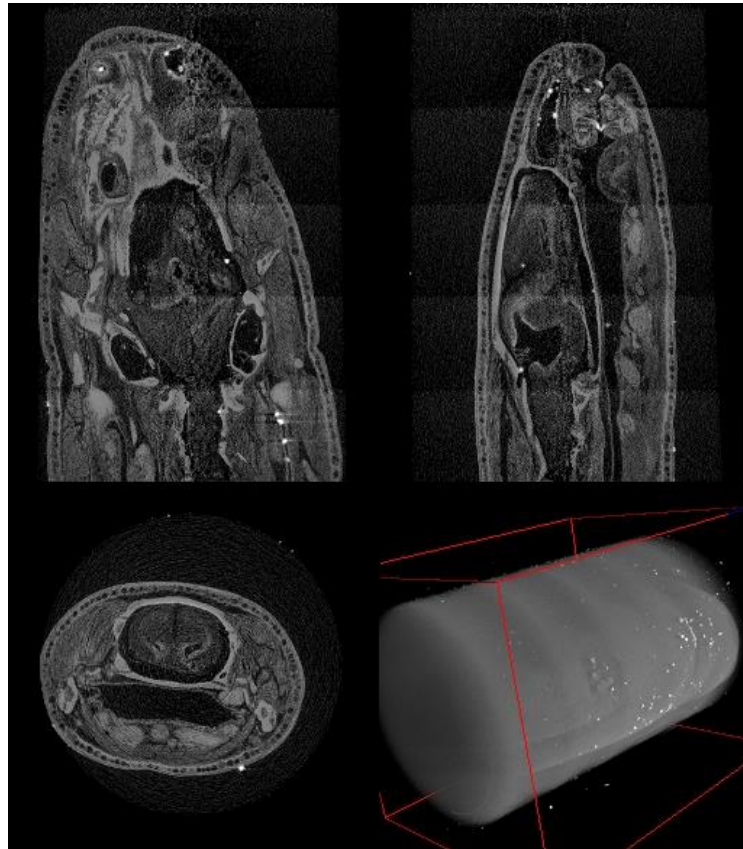
A case study from a service provider

Dr. Thomas Kleinteich

TPW CTinspect GmbH, Neuss

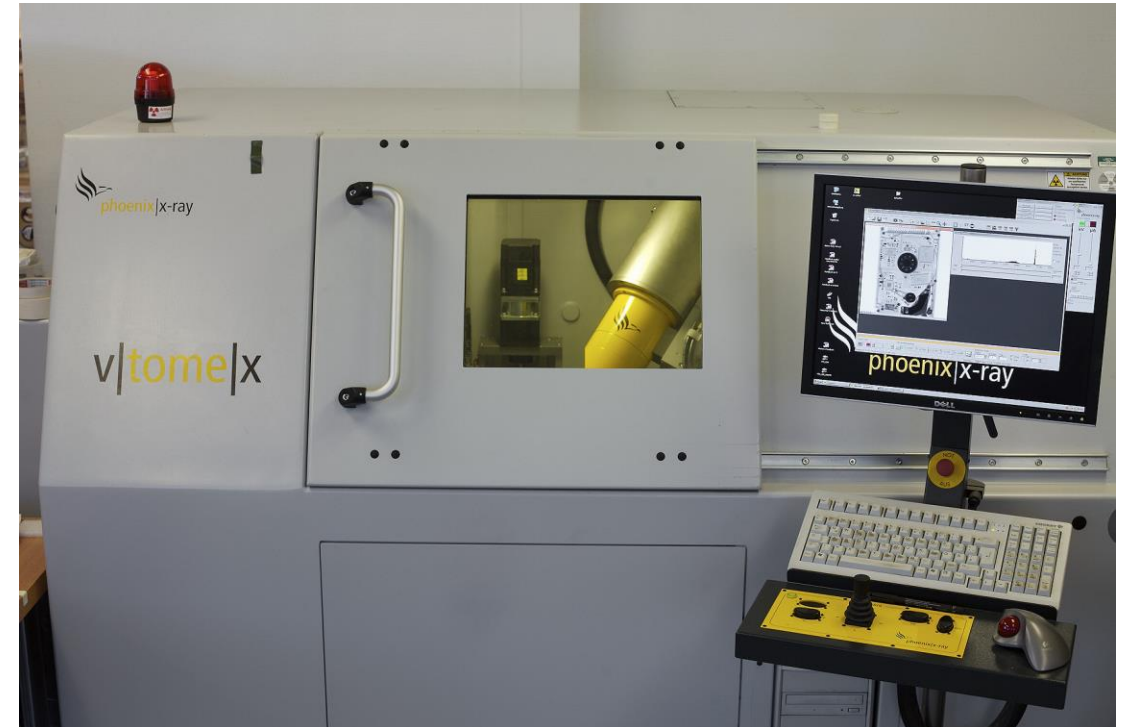
2006

Hamburg



I collected 1st CT scan experiences at DESY Hamburg

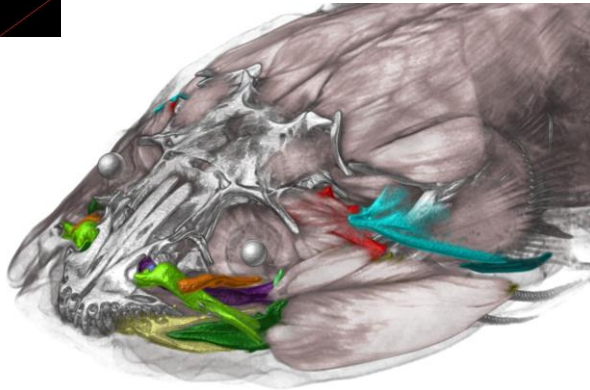
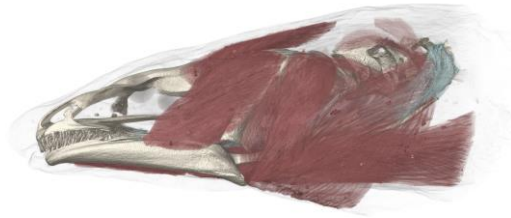
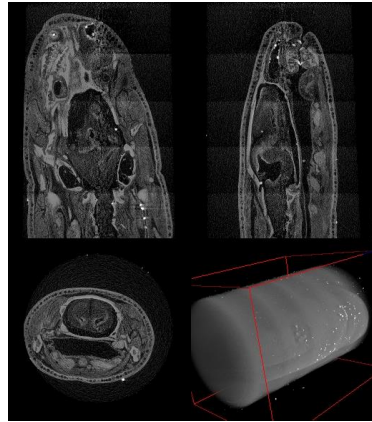
Neuss



ROWO GmbH – a **service provider** for material inspections – started CT imaging service for customers with v|tome|x s 225

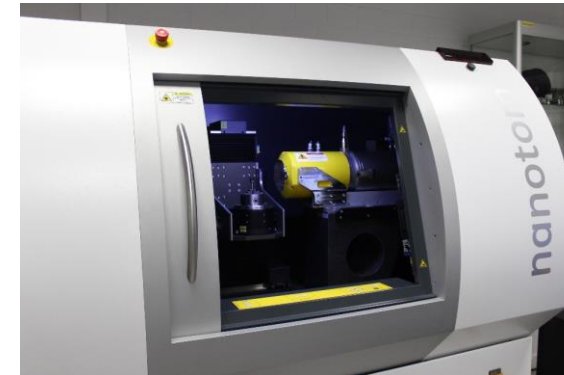
2016

Hamburg – Seattle - Kiel



Gained CT experience by working on various projects in vertebrate anatomy and biomechanics

Neuss



ROWO GmbH, which meanwhile became **TPW Prüfzentrum GmbH**, grew from one to three CT systems



2016

Hamburg – Seattle - Kiel



Gained CT experience by working on various projects in vertebrate anatomy and biomechanics

Neuss



ROWO GmbH, which meanwhile became **TPW Prüfzentrum GmbH**, grew from one to three CT systems

2024



Neuss

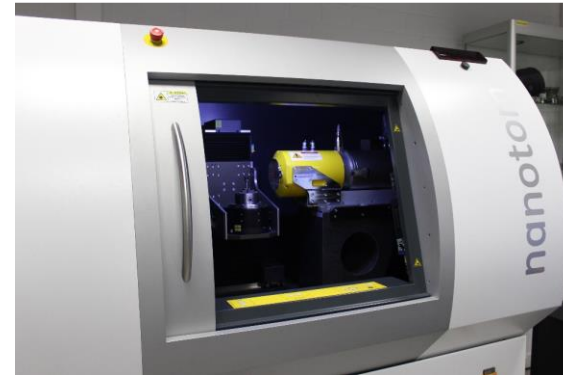


Three CT-systems:

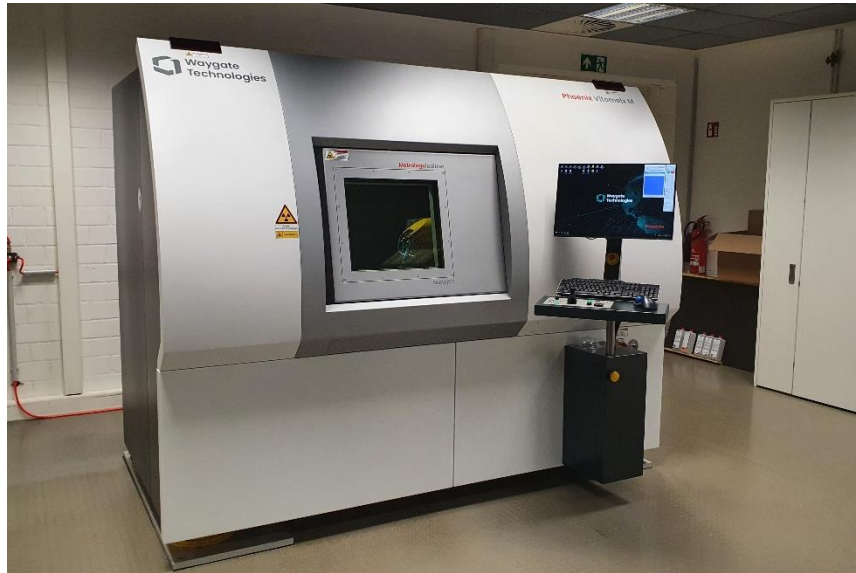
Nanotom m 180 kV nanofocus

v|tome|x m 180 kV nanofocus + 240 kV microfocus

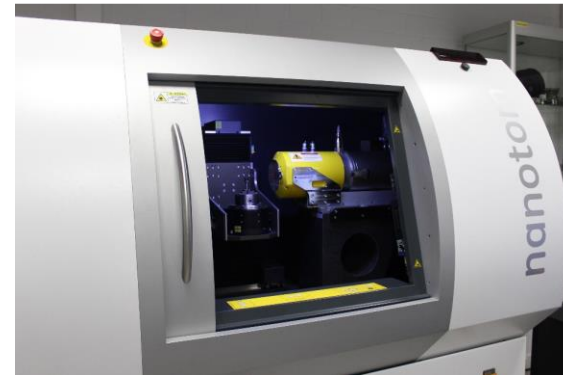
v|tome|x L 240 kV microfocus + 450 kV minifocus



2024



Neuss



Three CT-systems:

Nanotom m 180 kV nanofocus

v|tome|x m 180 kV nanofocus + 240 kV microfocus

v|tome|x L 240 kV microfocus + 450 kV minifocus

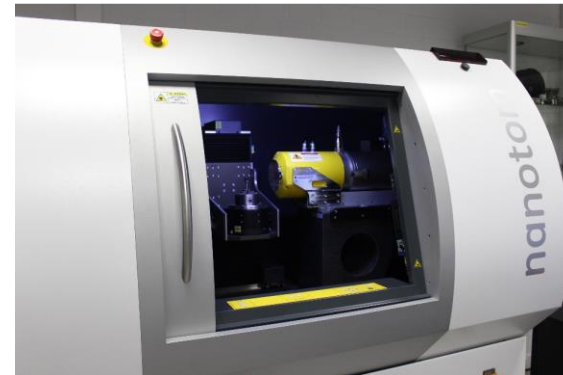


Team of 10 people – 7 of them are operators/inspectors

2024



Neuss



Three CT-systems:

Nanotom m 180 kV nanofocus

v|tome|x m 180 kV nanofocus + 240 kV microfocus

v|tome|x L 240 kV microfocus + 450 kV minifocus

... coming soon: v|tome|x m 300 kV microfocus

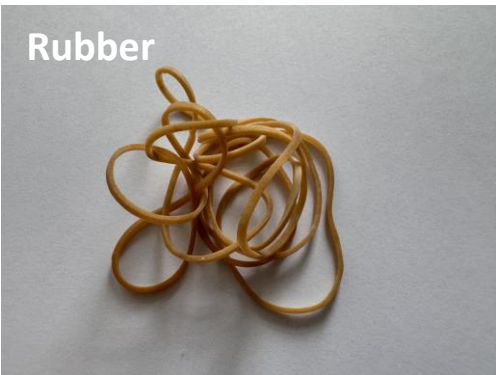
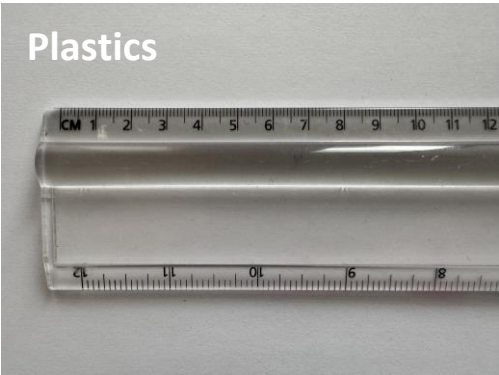
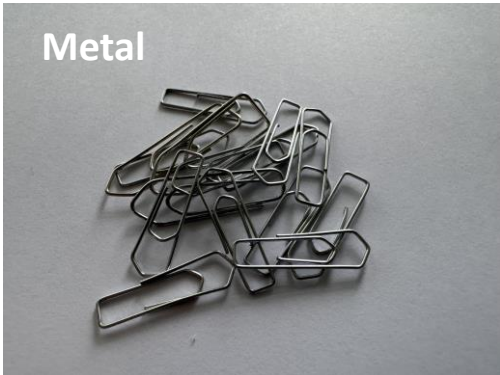


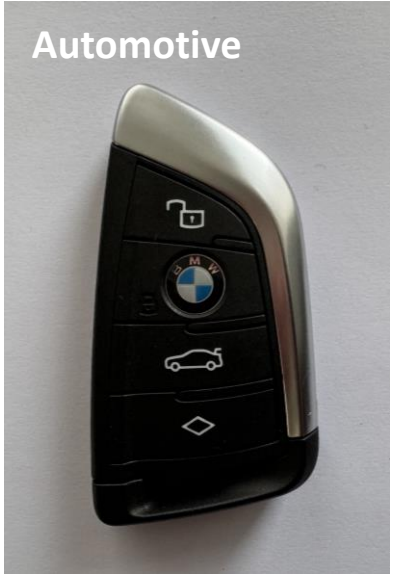
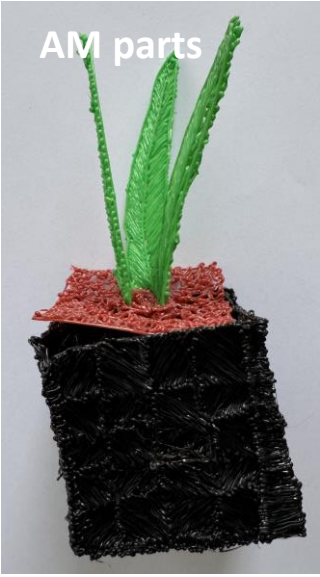
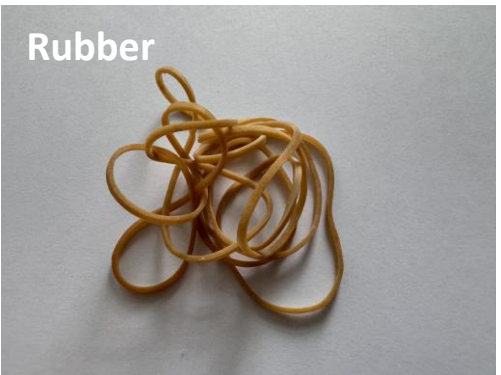
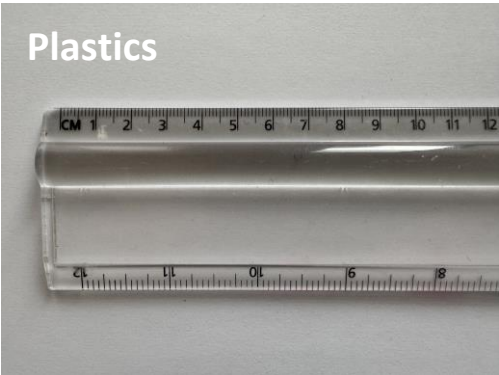
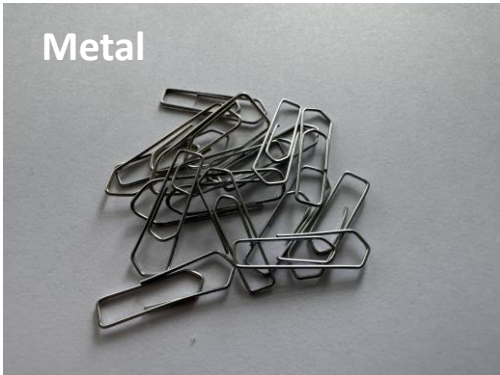
Team of 10 people – 7 of them are operators/inspectors

Service provider

Our customers are:

- companies with no CT equipment for their own that need to have their products CT inspected
- are experienced CT users in need for over capacities
- universities and other research facilities
- other service providers, e.g. from the field of metrology
- ...and more





Metal



Plastics



Rubber



Stone



Wood



AM parts



Automotive



Electronics



Batteries



Rocks/Grains



Foams



Batch sizes typically 1-20 parts

Metal



Plastics



Rubber



Stone



Wood



AM parts



Automotive



Electronics



Batteries



Rocks/Grains

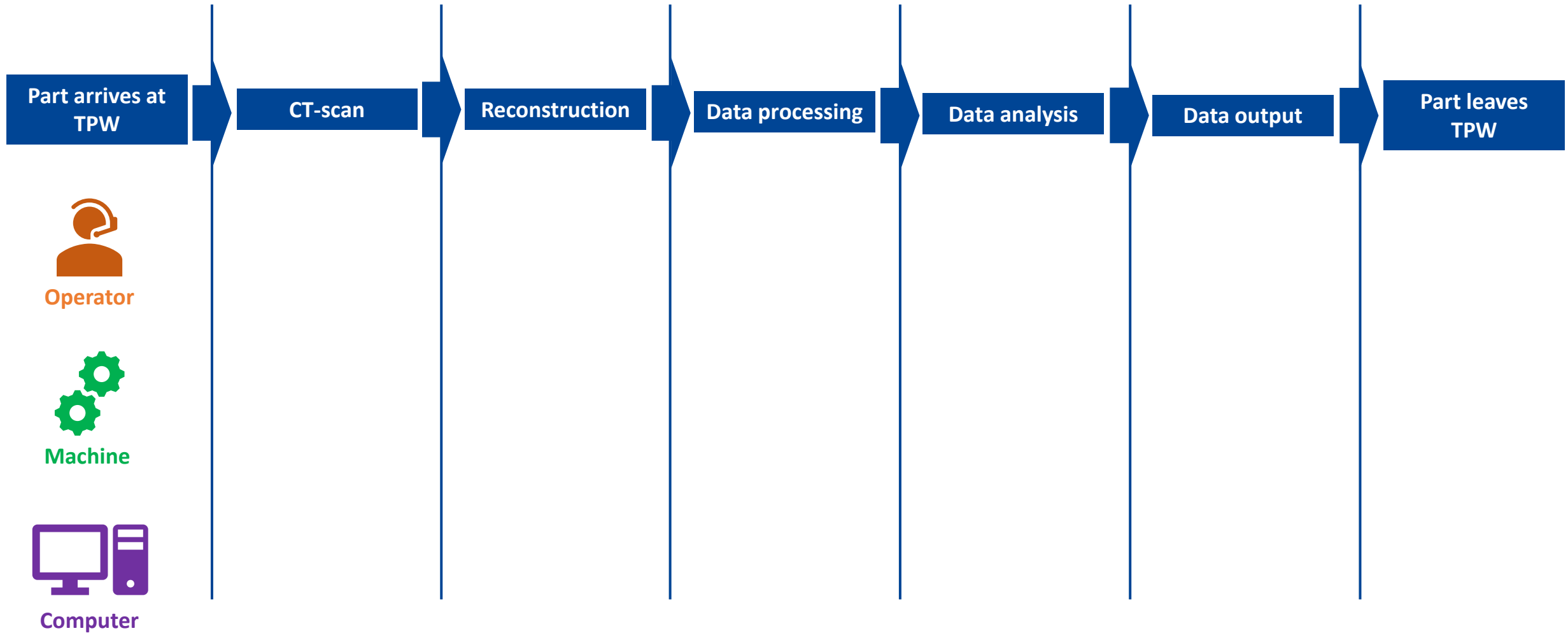


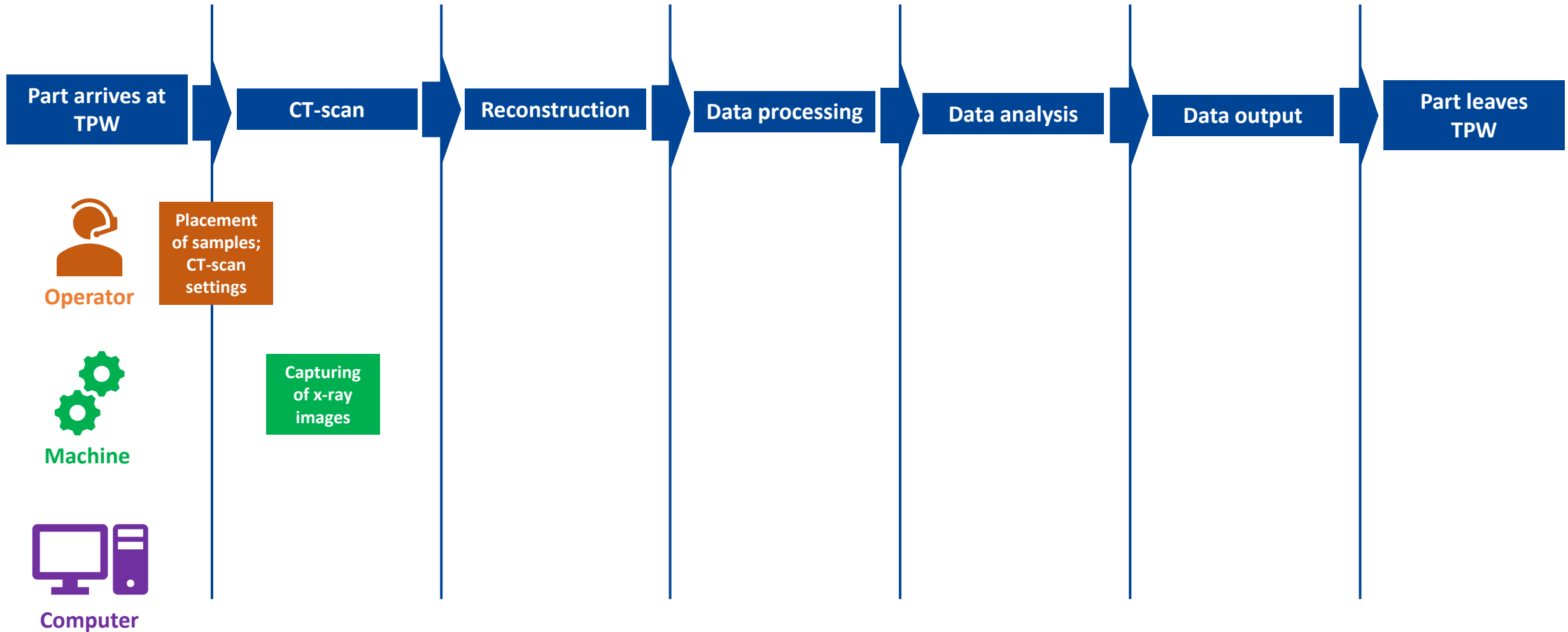
Foams

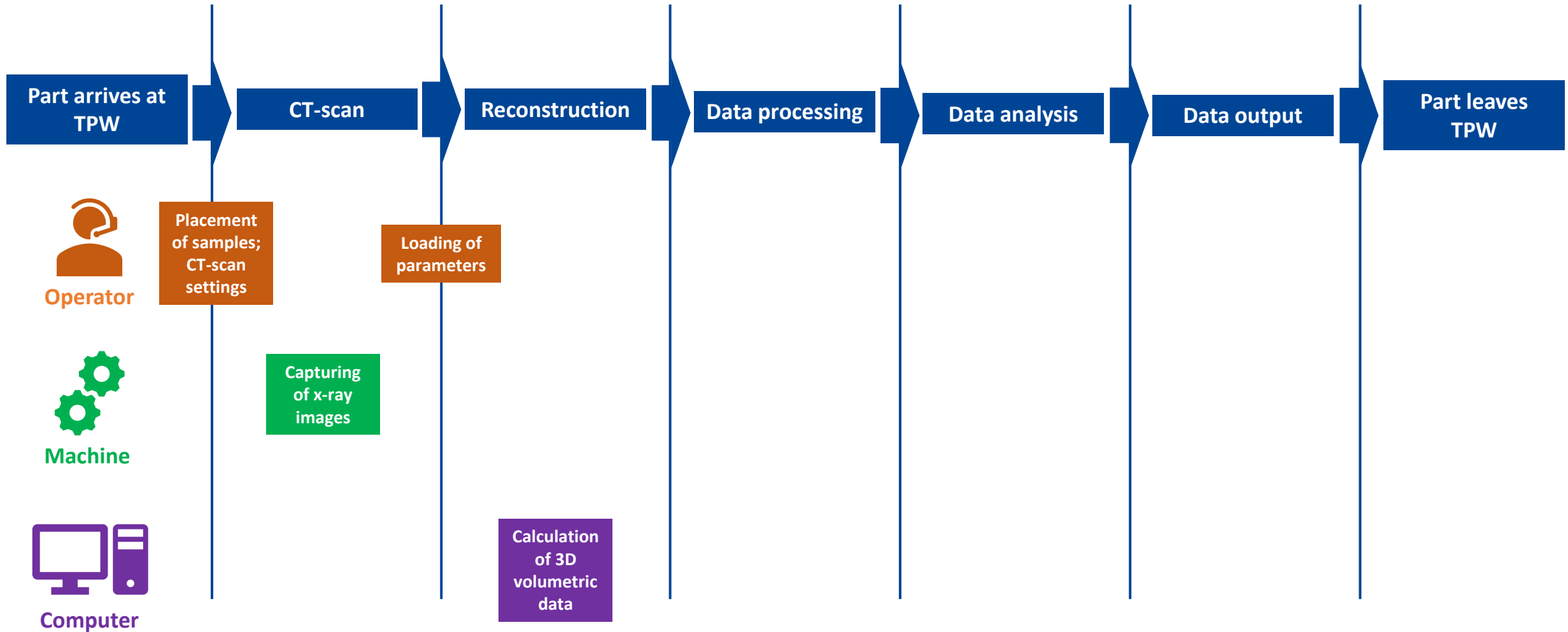


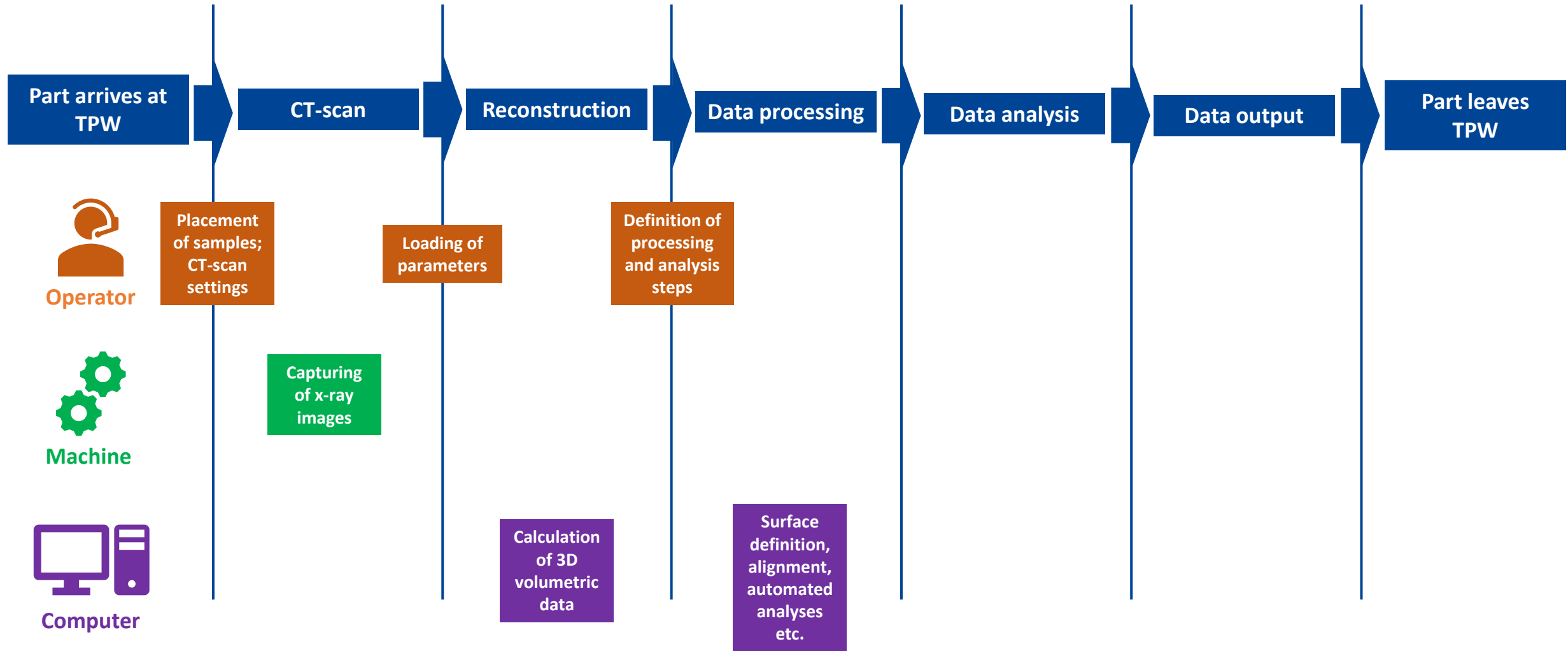
Batch sizes typically 1-20 parts

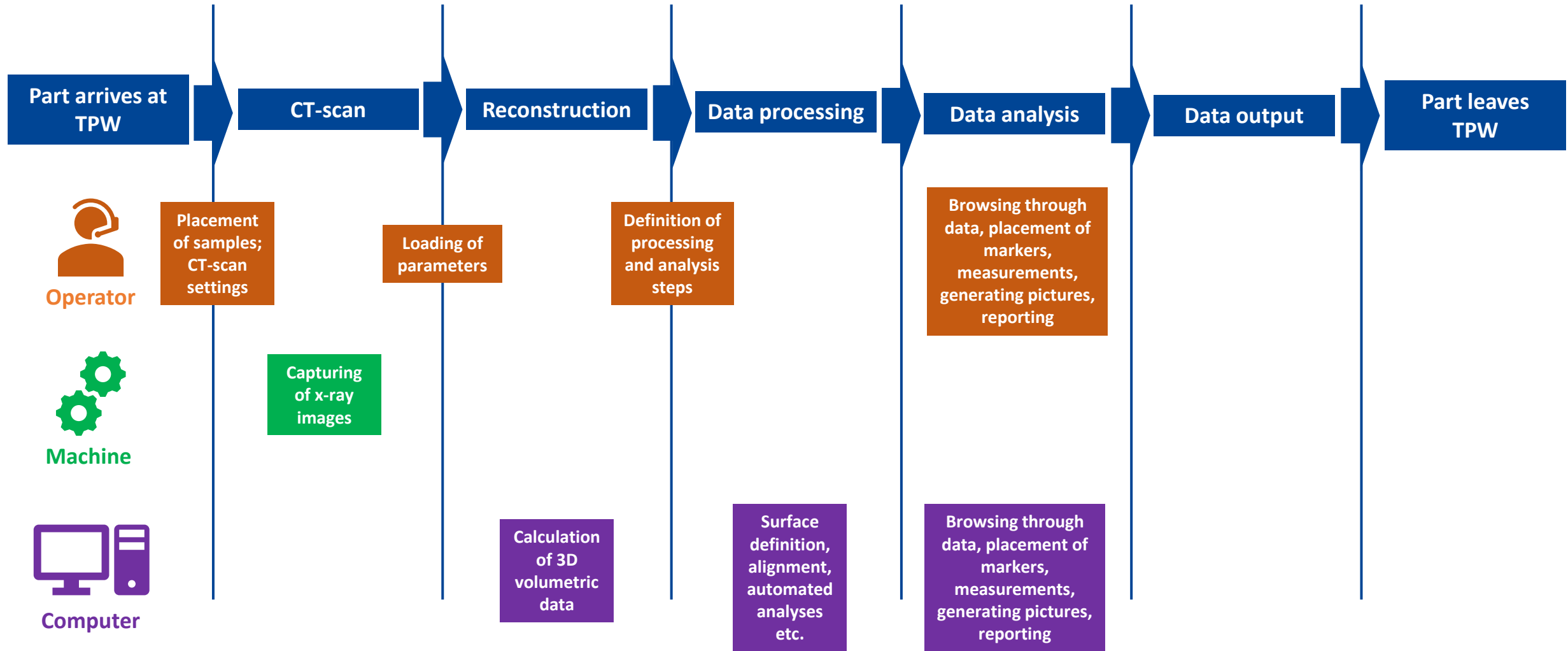
Exemplary images – no actual customer samples

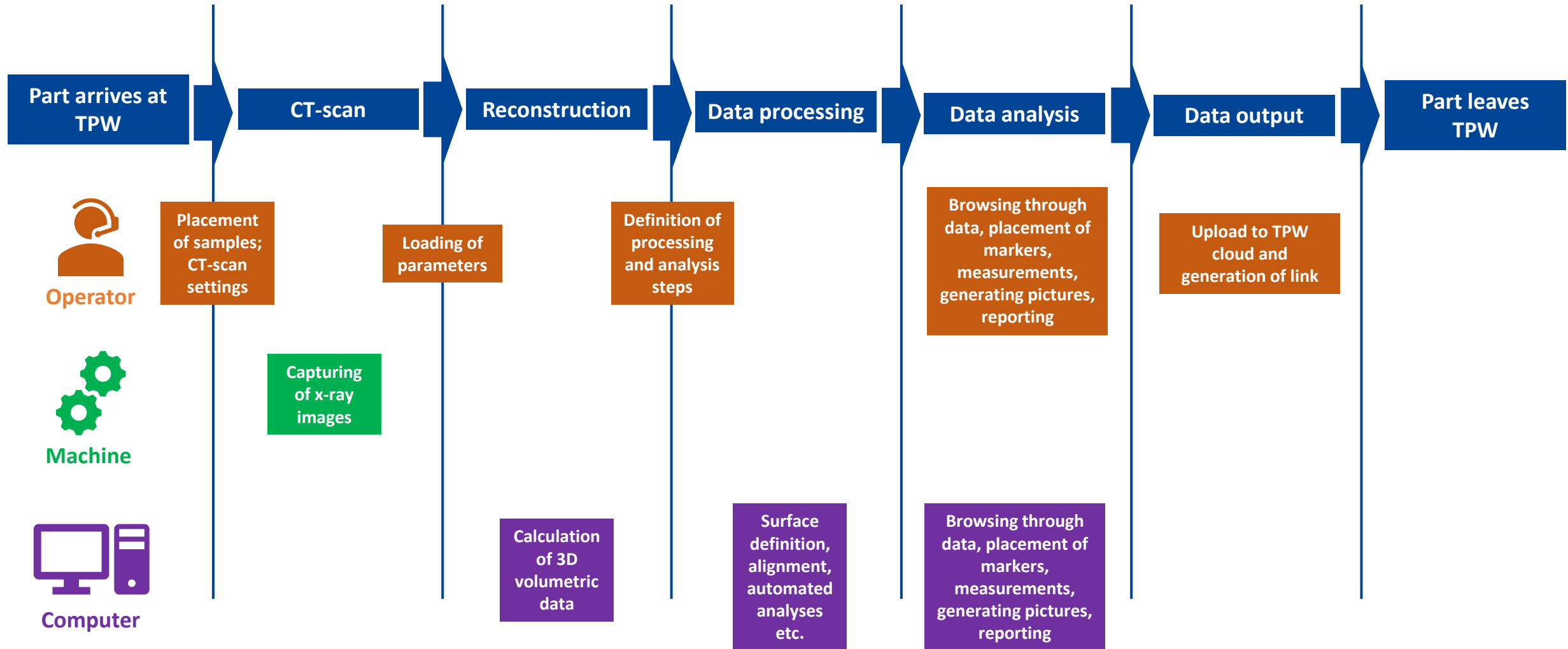


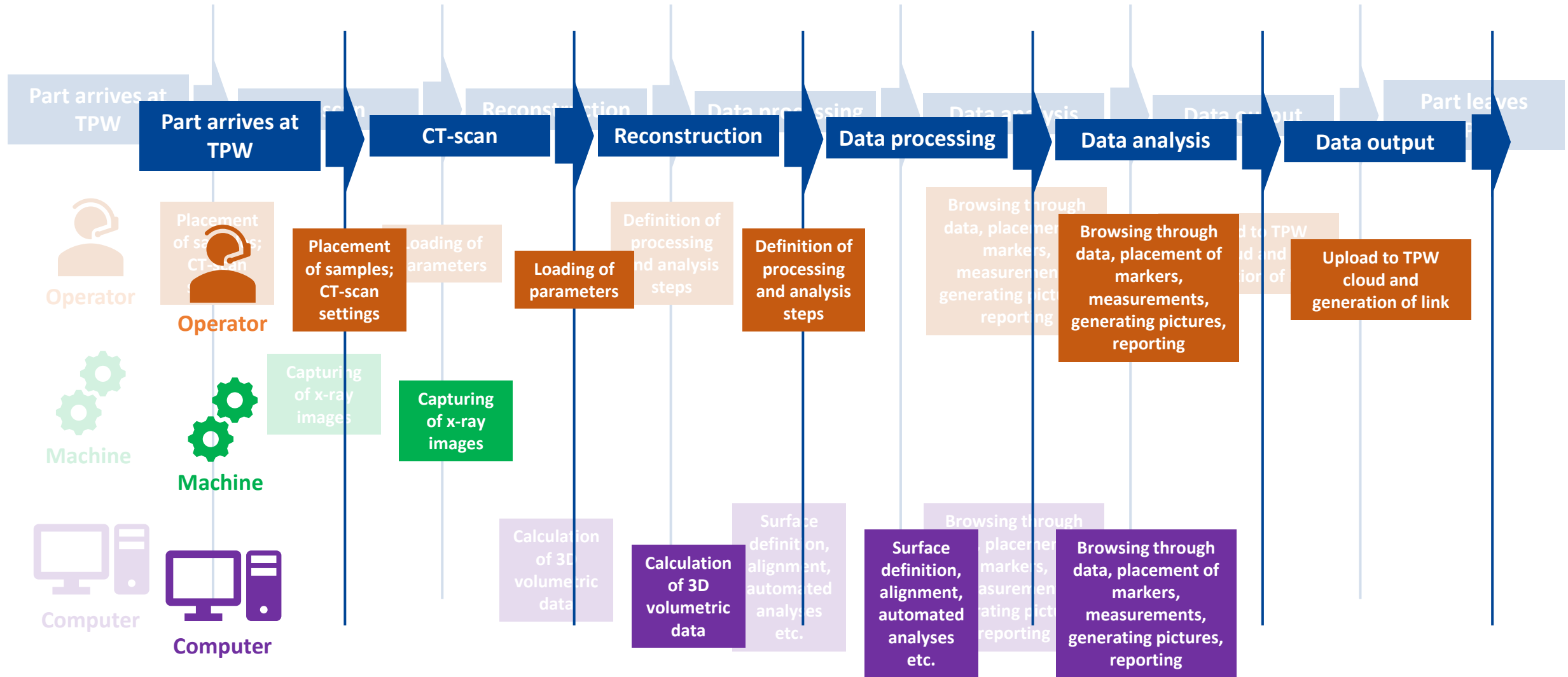


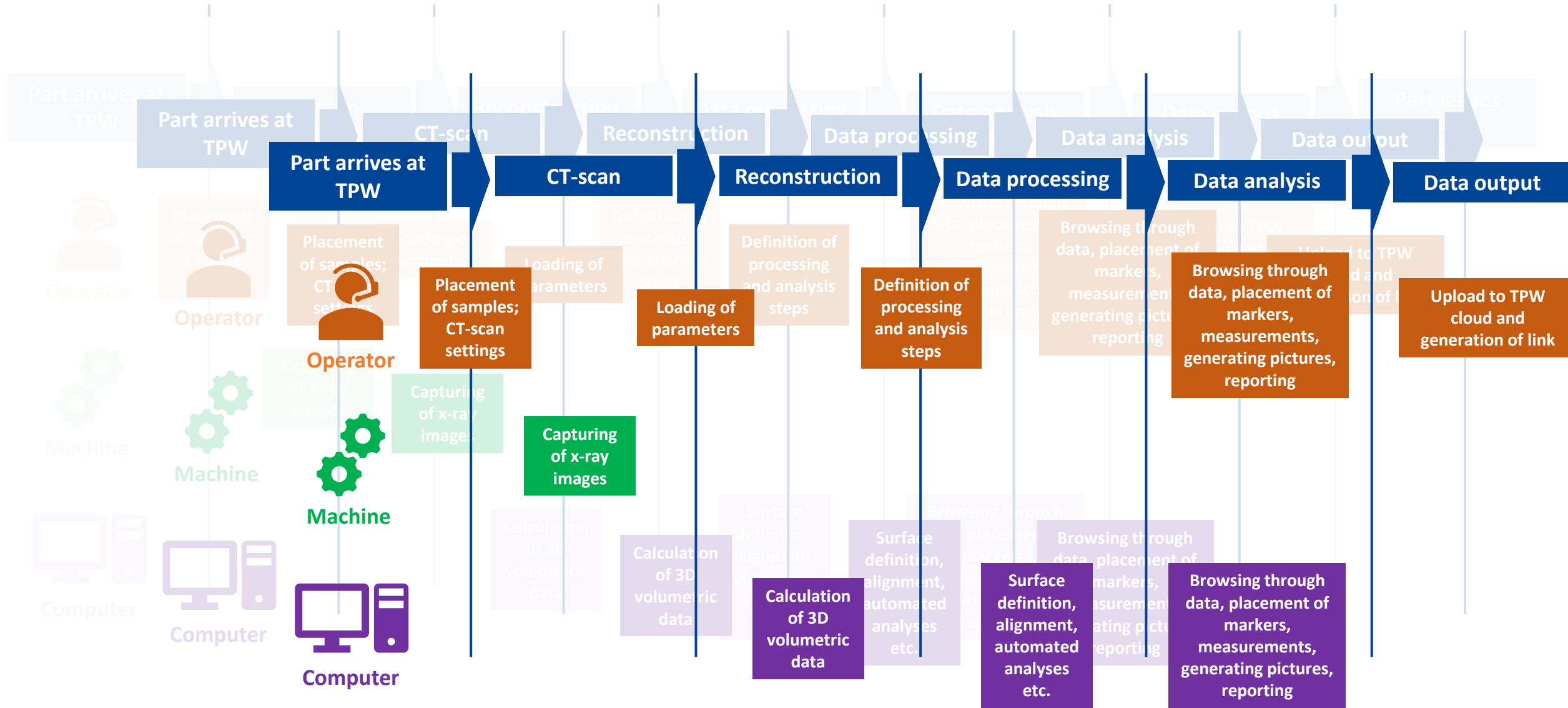












Common that operator performs scans while analyzing data from a different scan or even project

Diversity of objects to CT scan

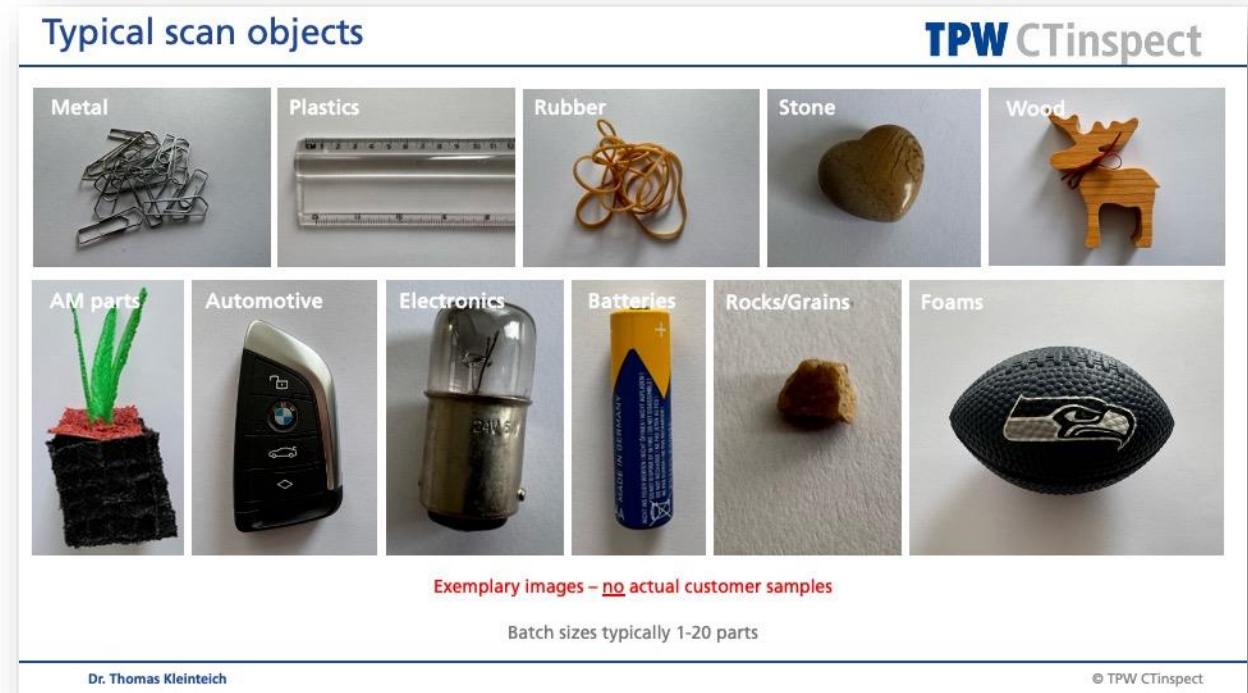
 **Machine:** 5 mins to 2 hours

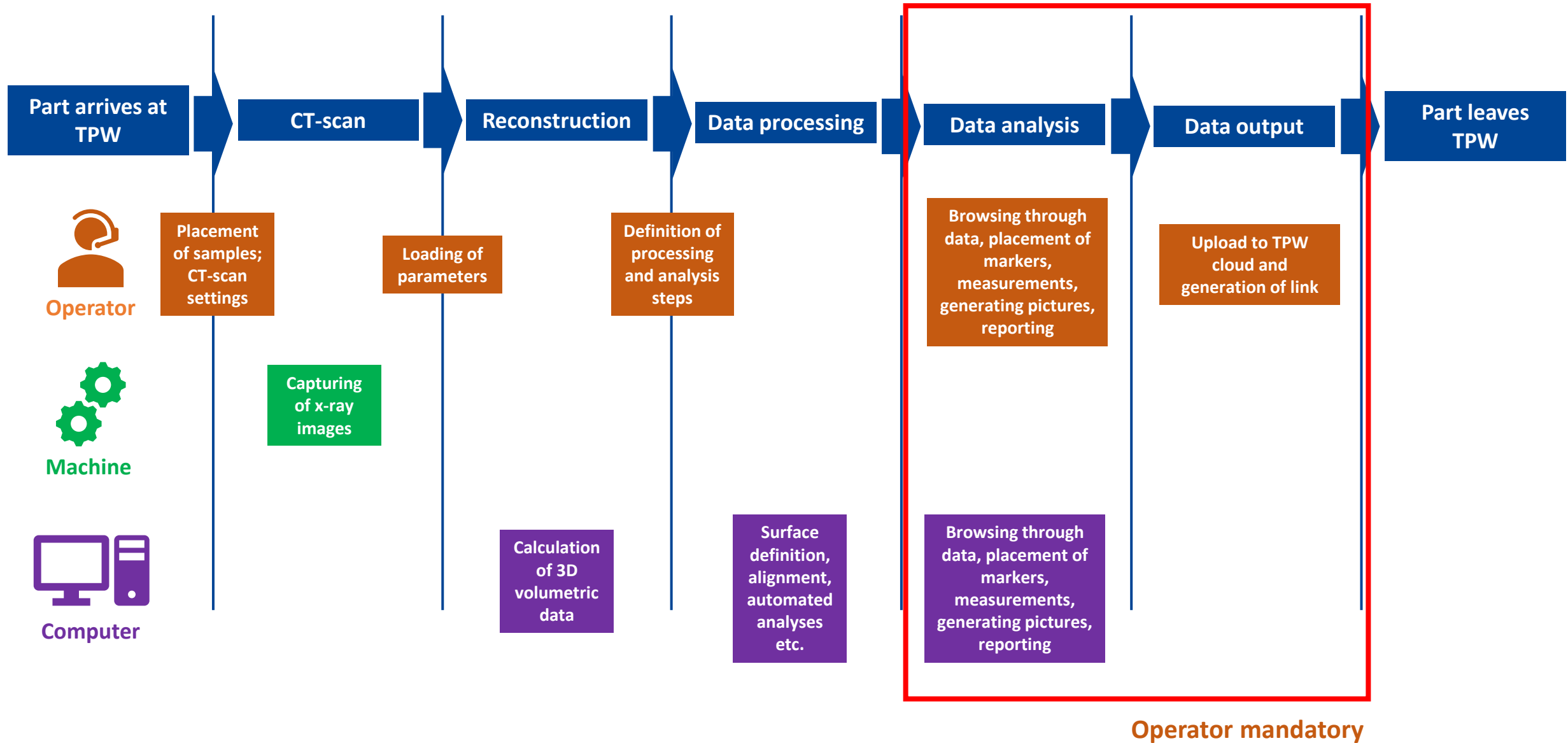
 **Analysis:** 5 mins to 3 hours

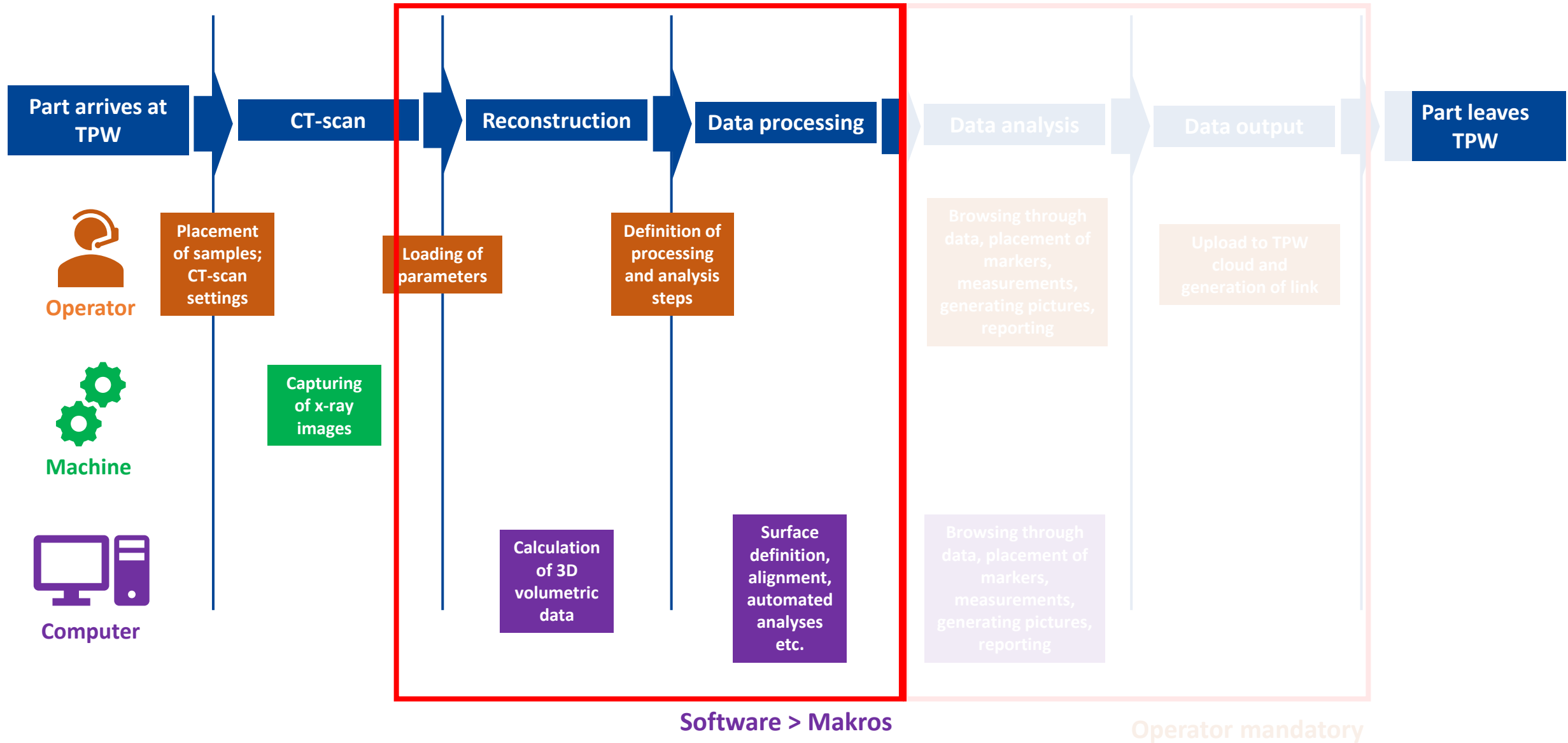
Times for **reconstruction, data processing, and analysis** do not correlate with **CT machine time**

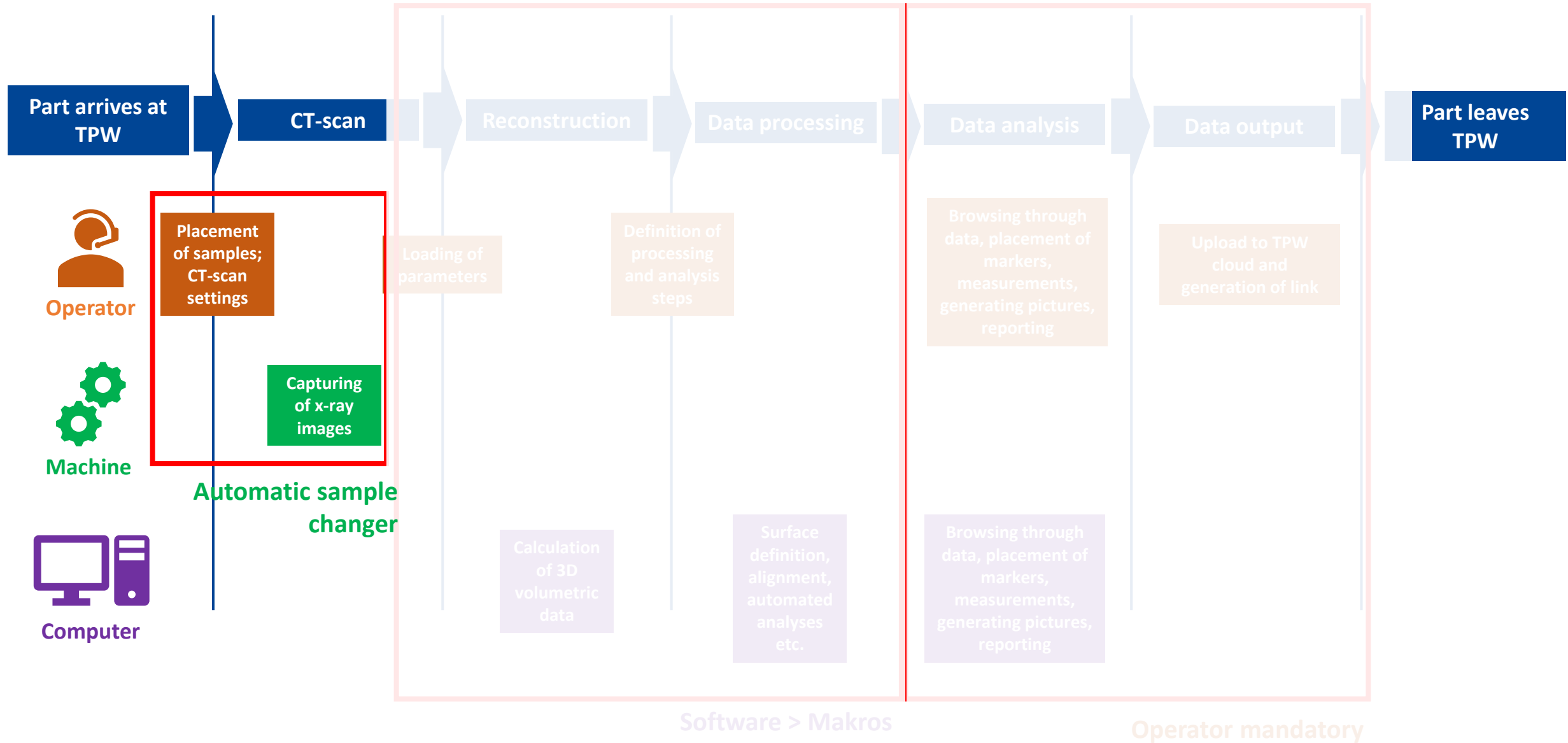
Disruptive for **operator** when trying to maximize **machine time** → start next scan once previous scan is finished

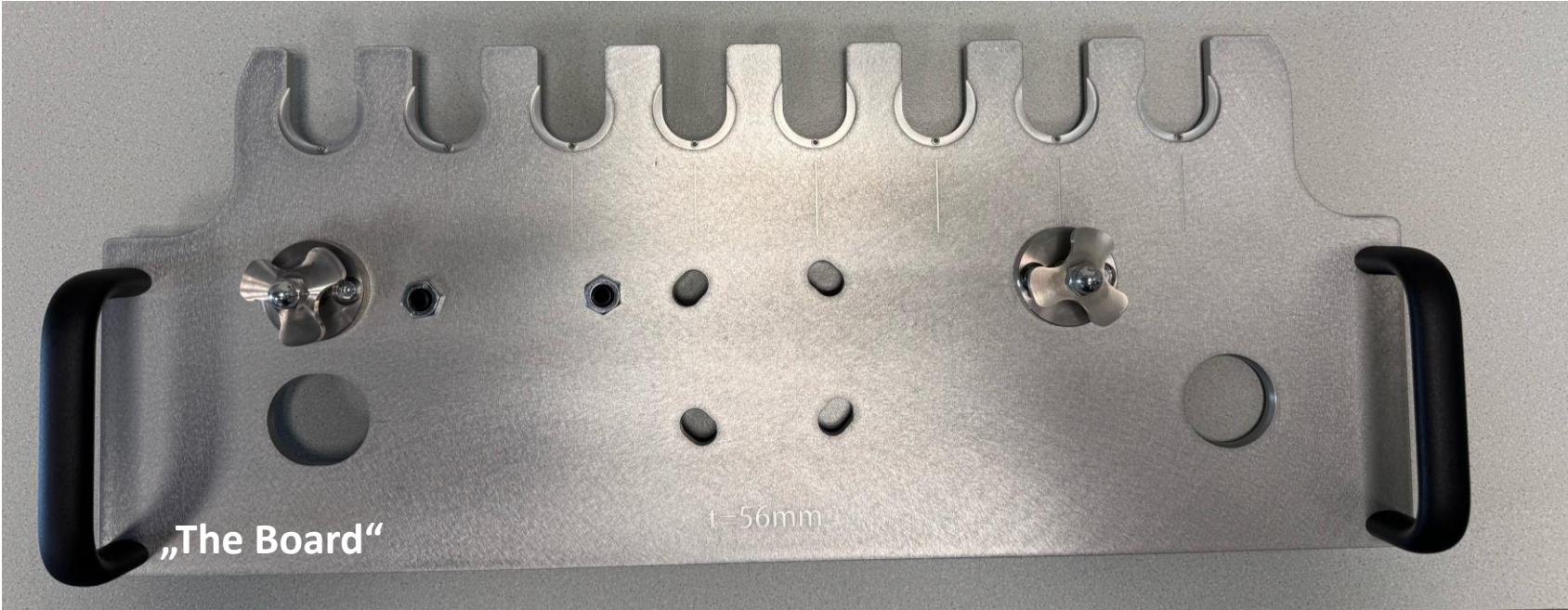
Aim: automate processes to minimize distractions for operator

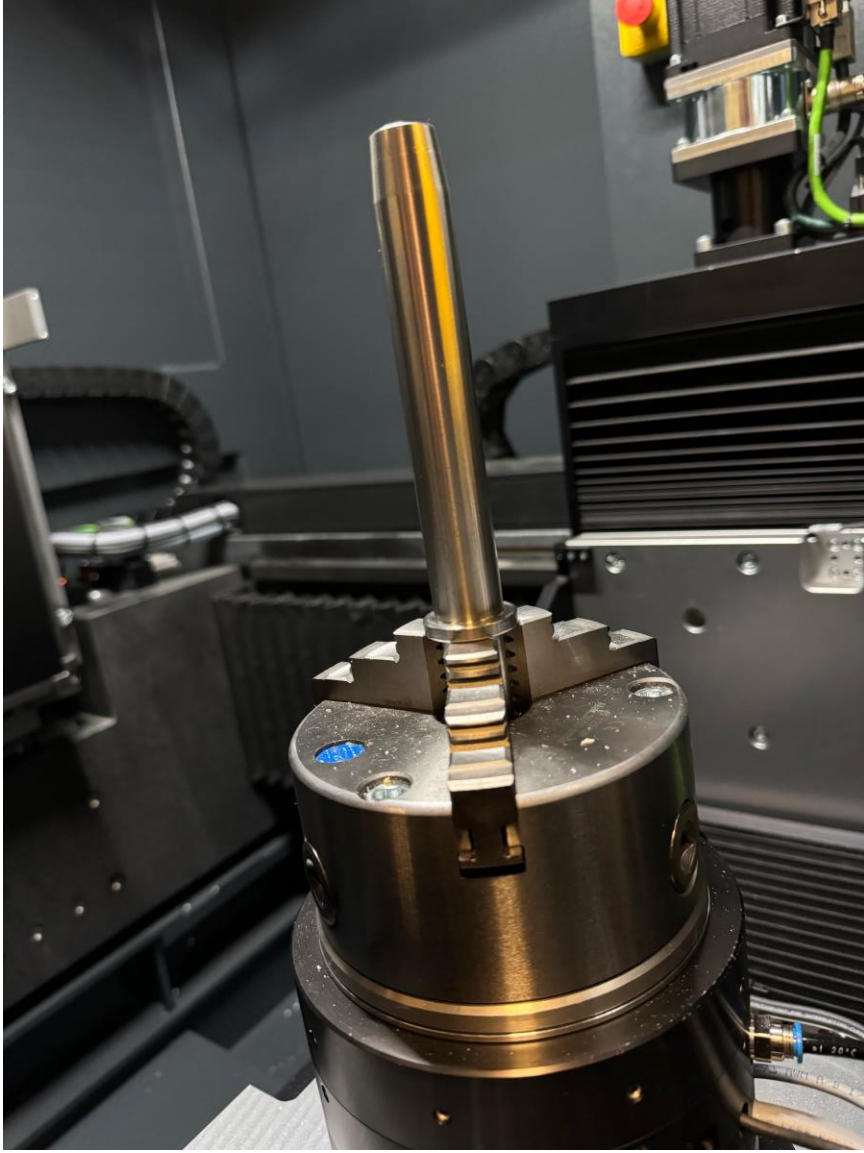
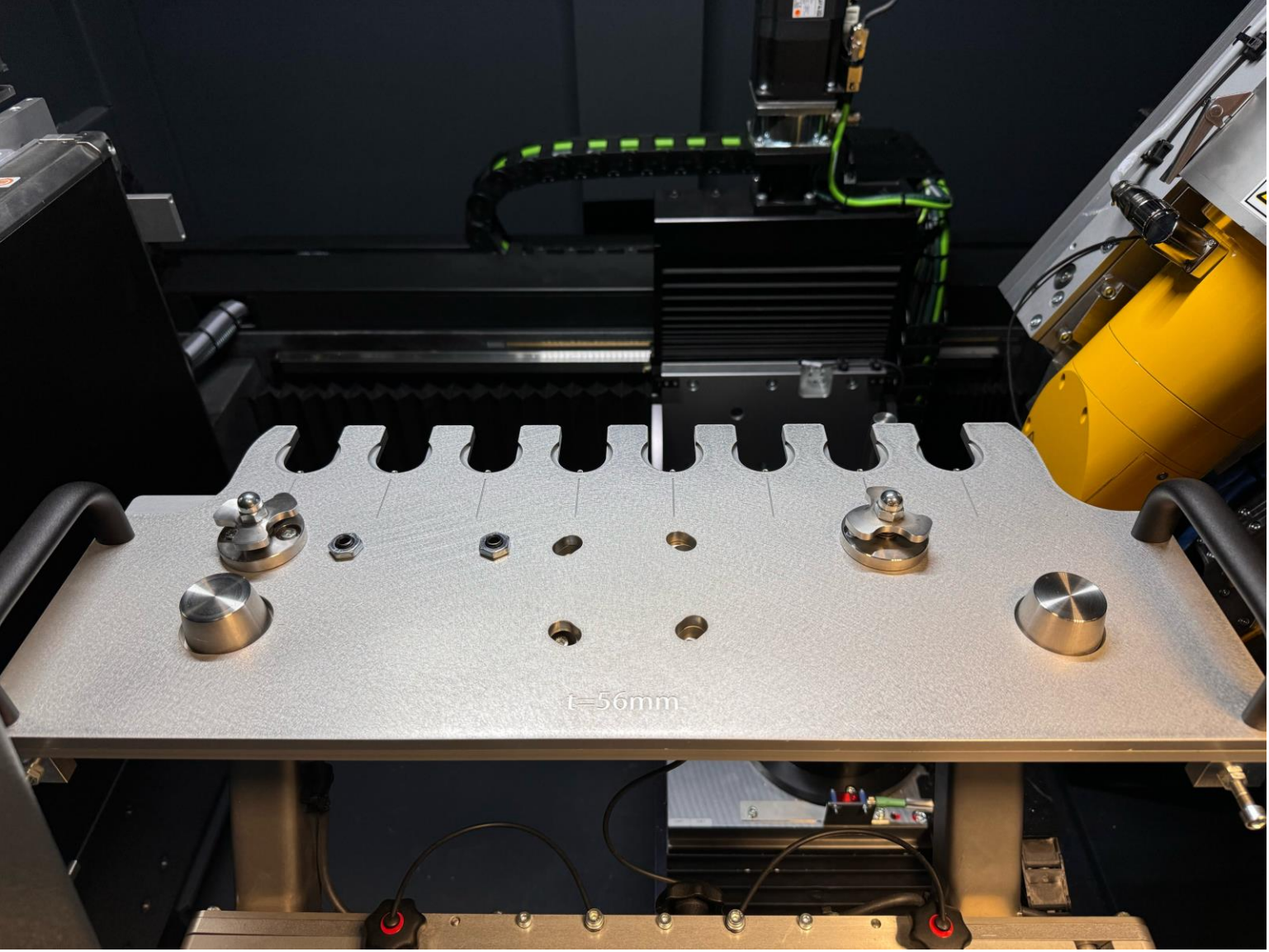










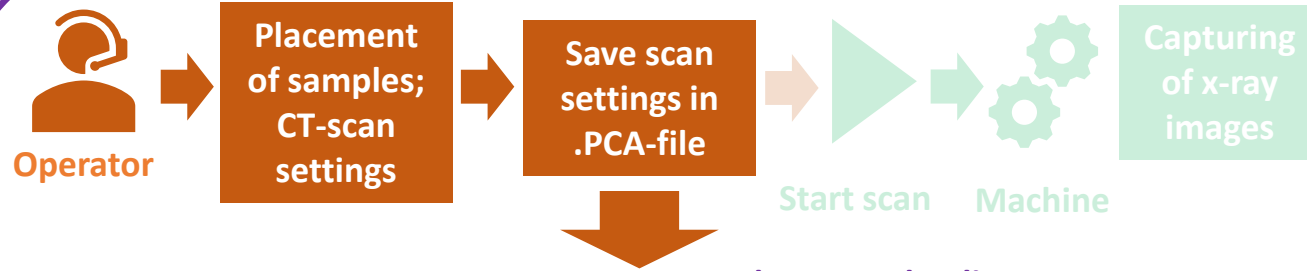


datos|x acq

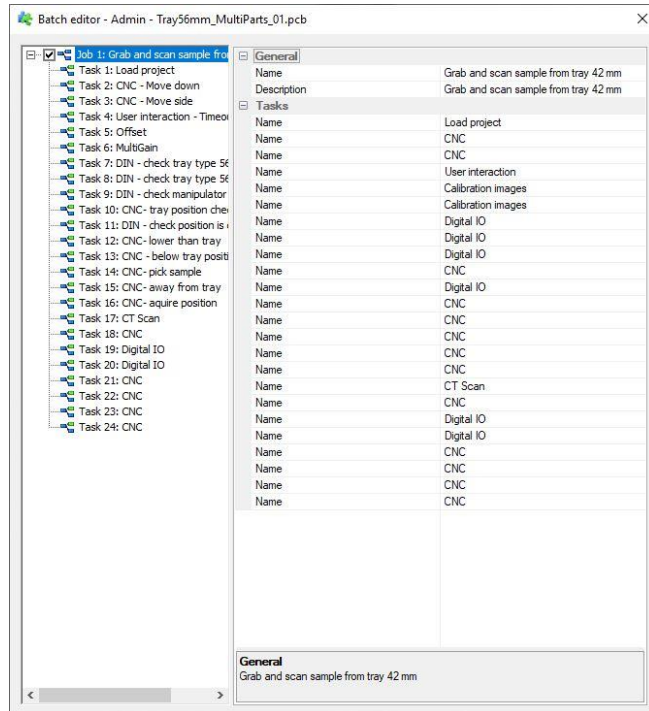
Standard workflow for CT-scan



datos|x acq

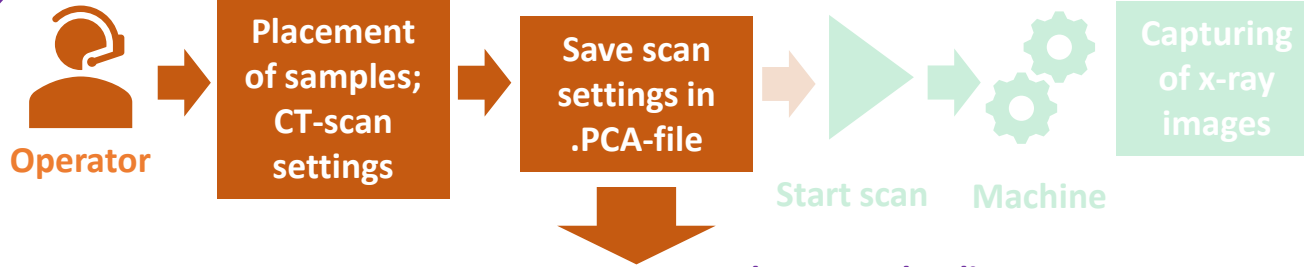


datos Batch editor

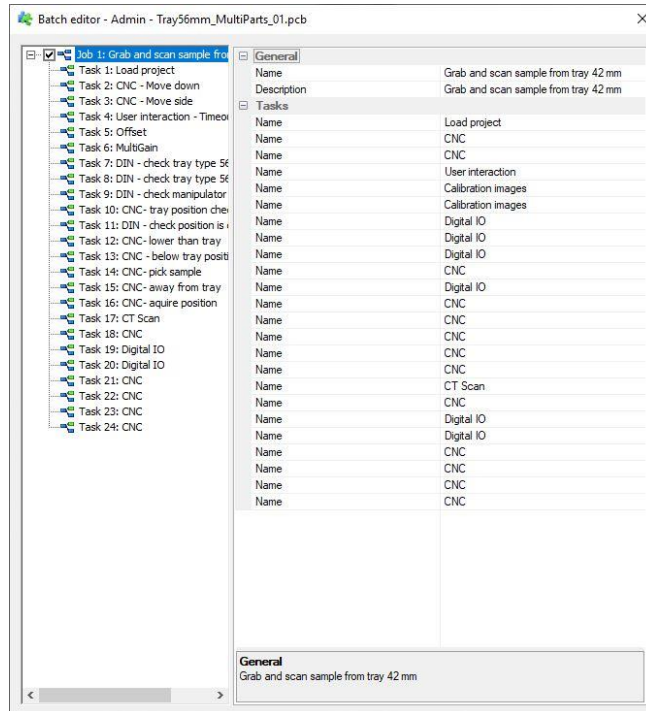


Define jobs in .PCB-file

datos|x acq



datos Batch editor



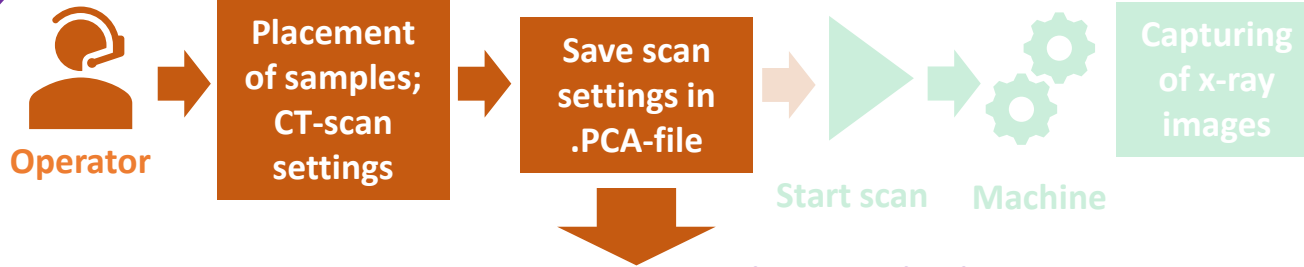
Define jobs in .PCB-file

Job (= CT-scan plus sample handling)

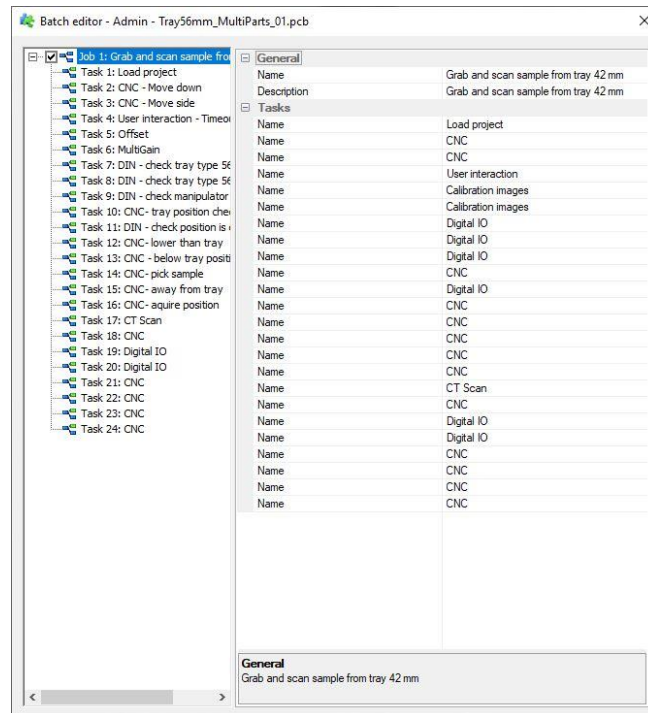
Defined by tasks

- move CNC out of field of view
- capture gain and offset images
- grab sample
- load .PCA-file
- move to acquire position
- perform scan
- perform reconstruction
- bring sample back

datos|x acq



datos Batch editor



Define jobs in .PCB-file

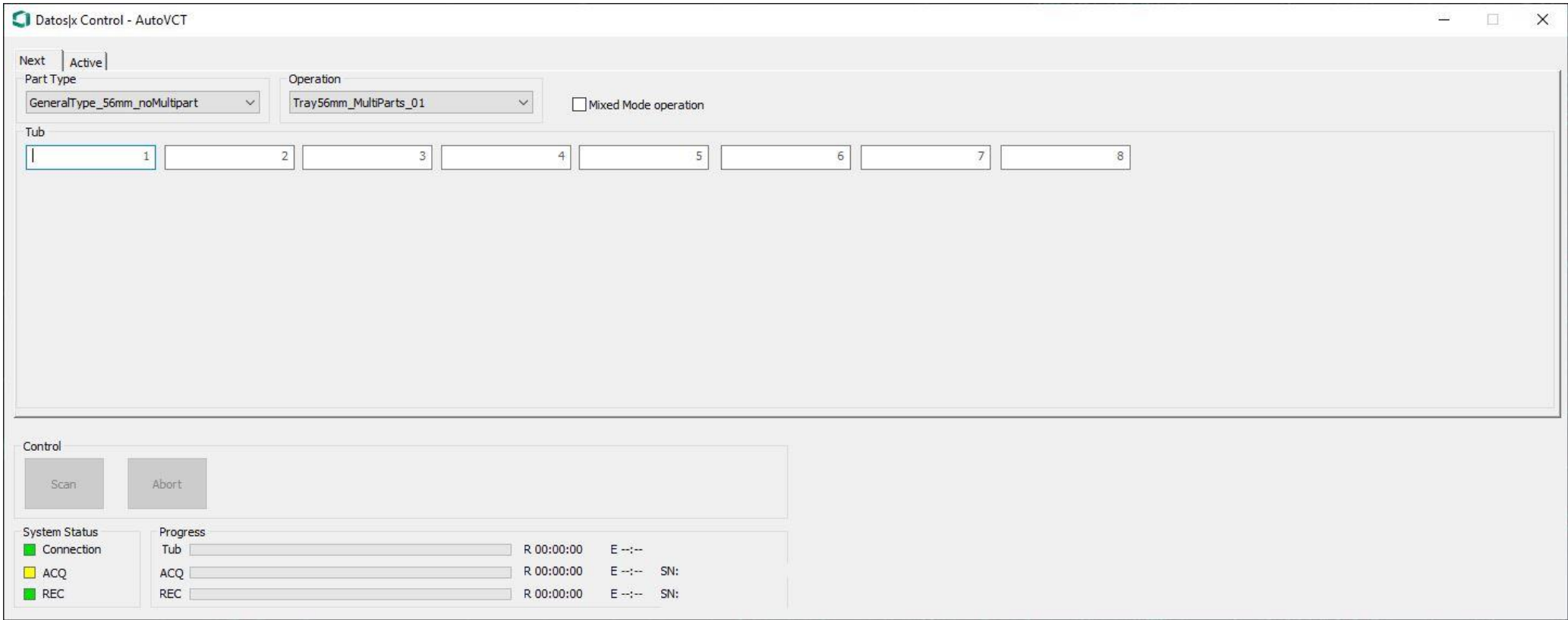
Activate jobs through datos|x control

Job (= CT-scan plus sample handling)

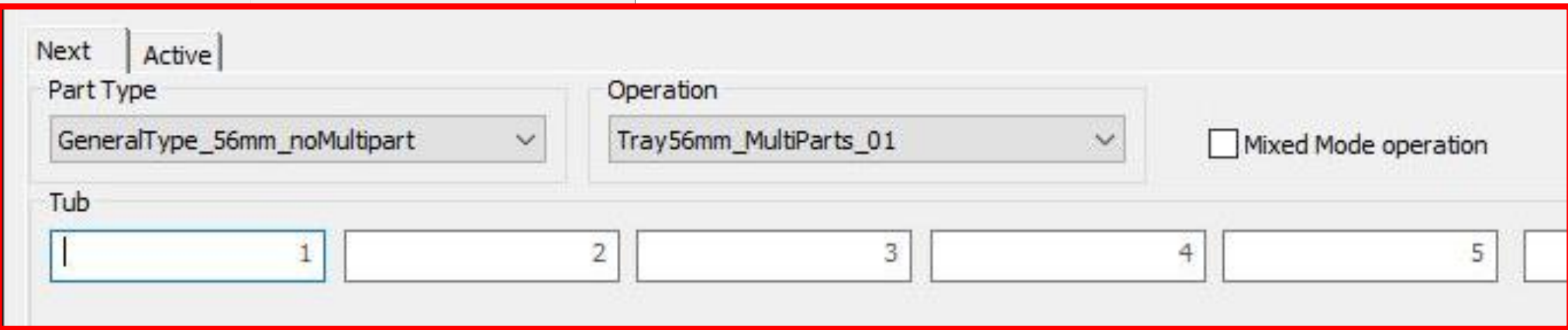
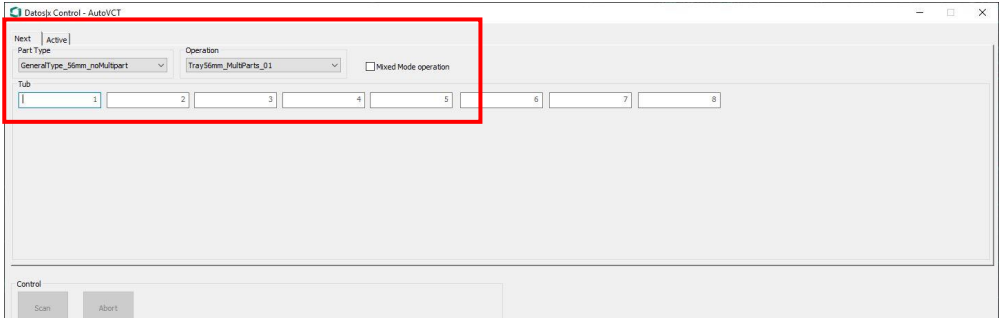
Defined by tasks

- move CNC out of field of view
- capture gain and offset images
- grab sample
- load .PCA-file
- move to acquire position
- perform scan
- perform reconstruction
- bring sample back

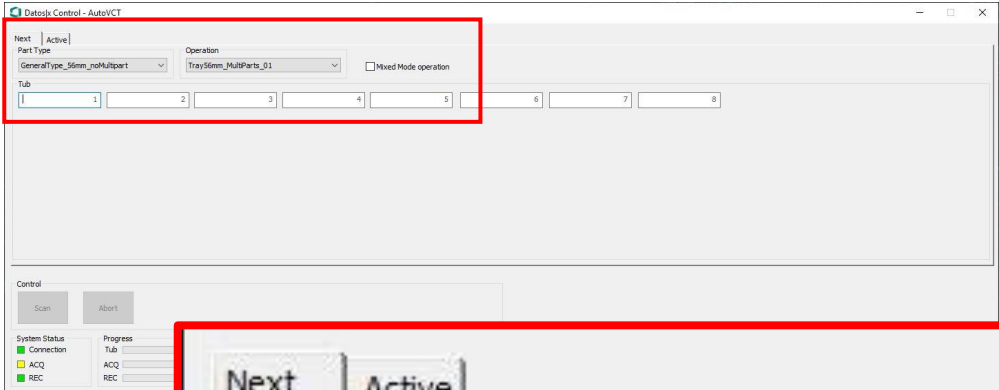
datos|x control



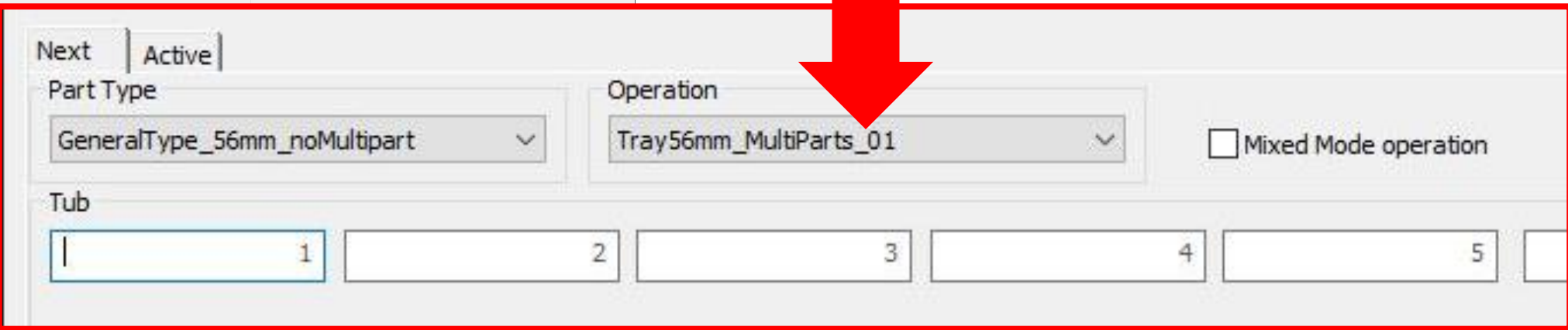
datos | x control



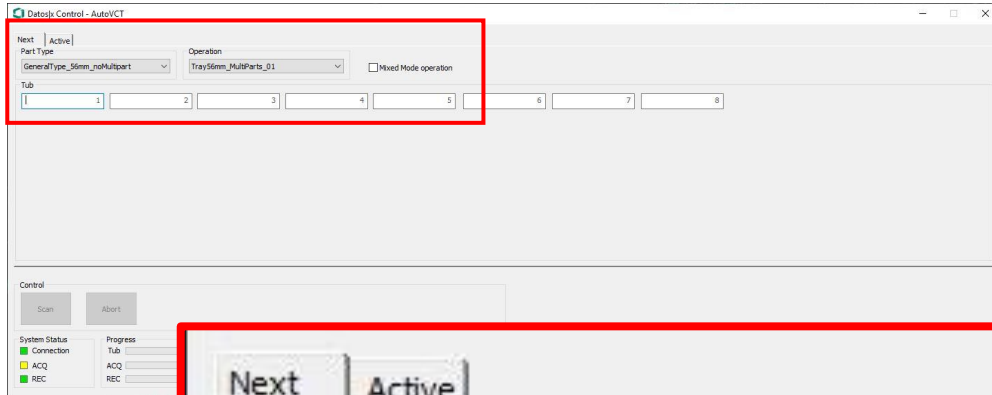
datos | x control



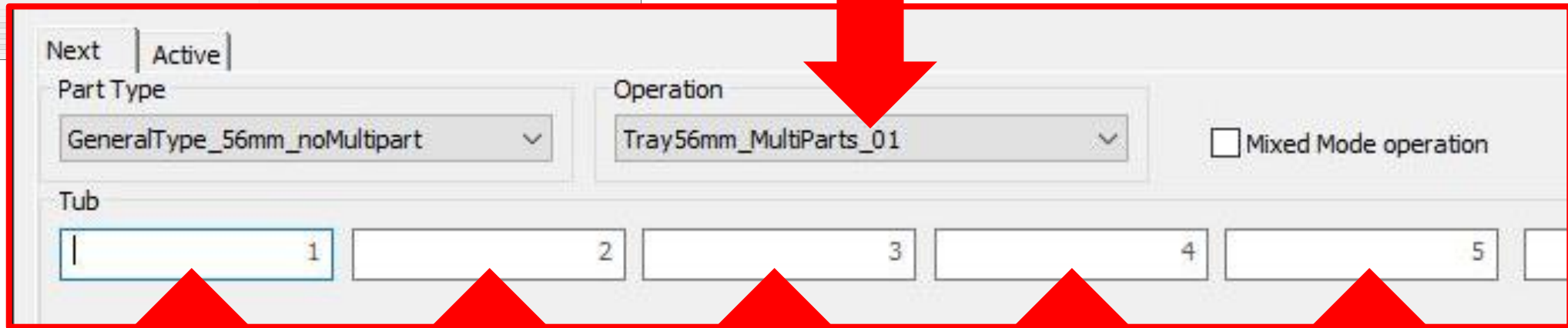
Job defined in .PCB file



datos | x control



Job defined
in .PCB file



File names for scan
→ Serial numbers

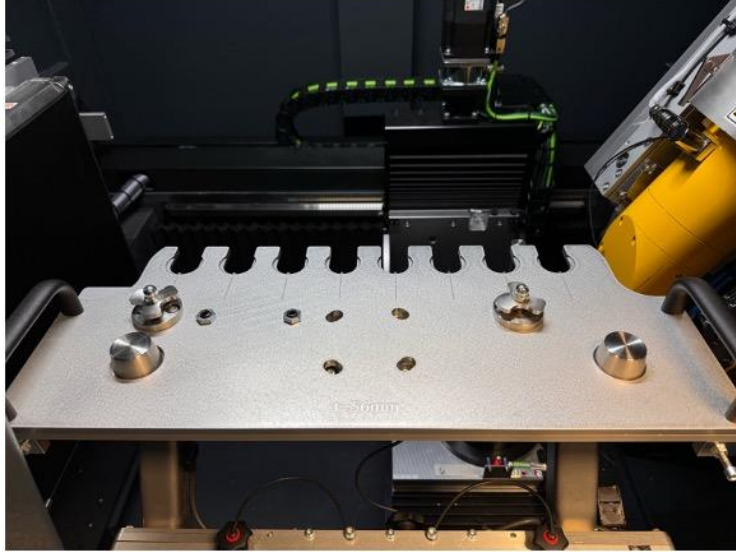
File names for scan
→ Serial numbers

File names for scan
→ Serial numbers

File names for scan
→ Serial numbers

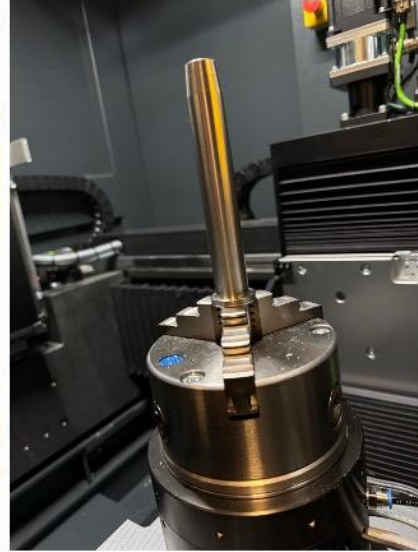
File names for scan
→ Serial numbers

Sample changer hardware



Dr. Thomas Kleinteich

TPW CTinspect



© TPW CTinspect

Sample changer software

TPW CTinspect

datos|x control

The screenshot shows a software window titled 'datos|x control'. A red box highlights a section of the interface. At the top of this section, a brown box contains the text 'Job defined in .PCB file' with a red arrow pointing down to the 'Operation' dropdown menu. The 'Operation' dropdown is set to 'Tray56mm_MultiParts_01'. Below it, there are five input fields labeled 'Tub' with numbers 1 through 5. Red arrows point from each of these input fields to a red box below the screenshot. Each red box contains the text 'File names for scan → Serial numbers'.

Dr. Thomas Kleinteich

© TPW CTinspect

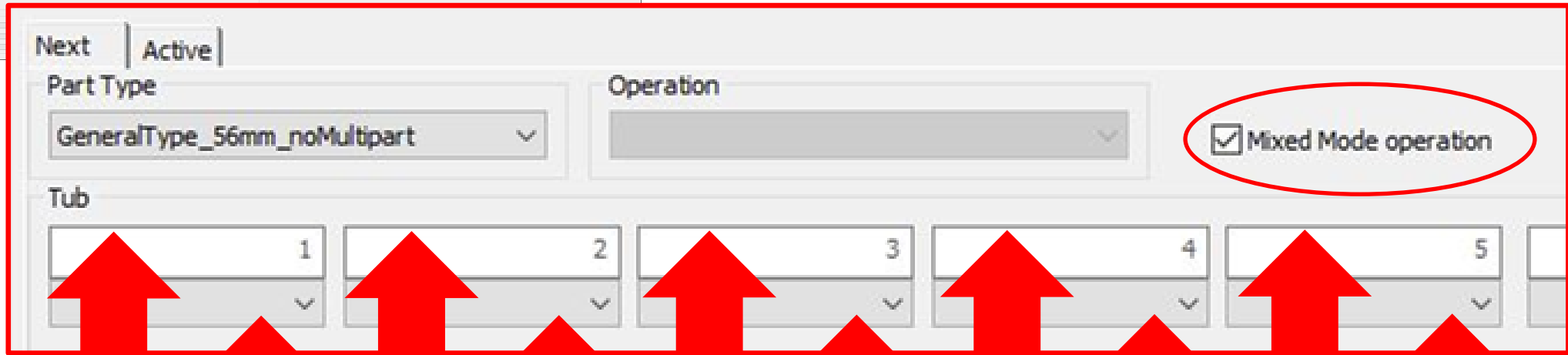
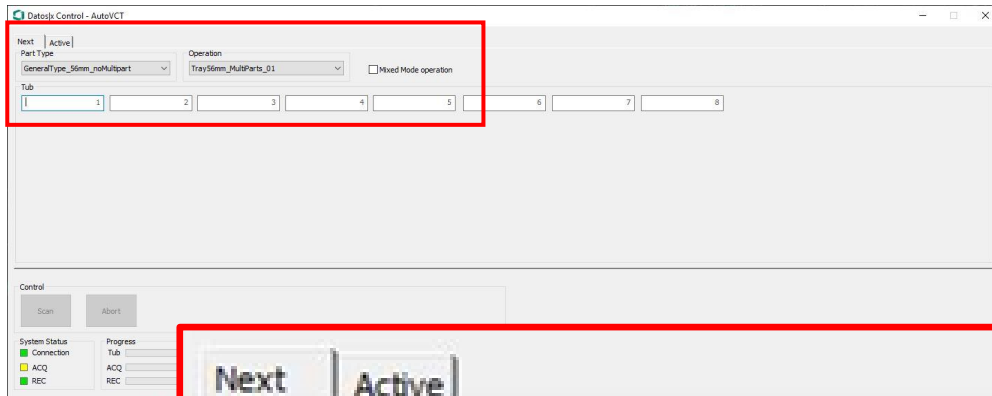


Useful for inspections of multiple similar parts

Possible to define multiple jobs in single .PCB → stack parts in sample holder and scan them separately

Link VGSTUDIO MAX makros to reconstruction output → fully automated workflows

datos | x control



File names for scan

File names for scan

File names for scan

File names for scan

File names for scan

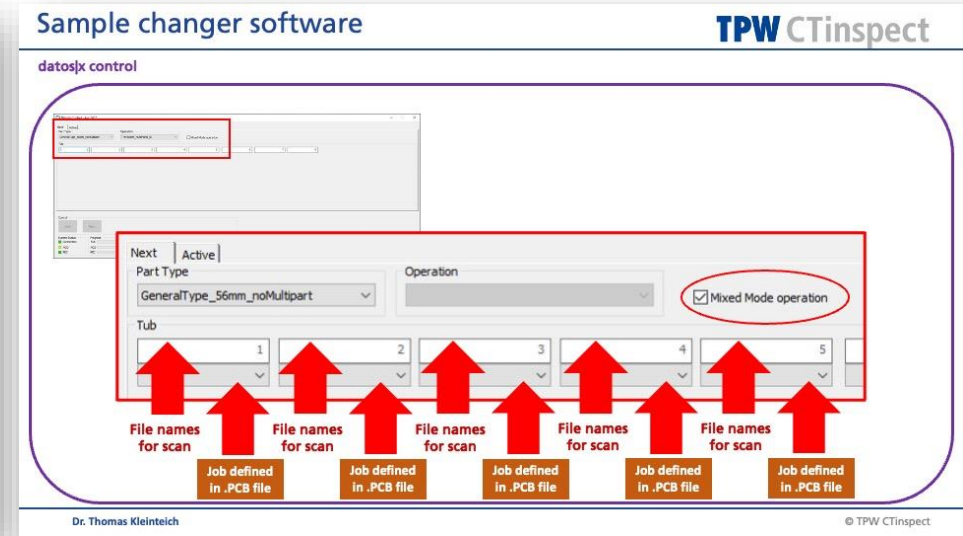
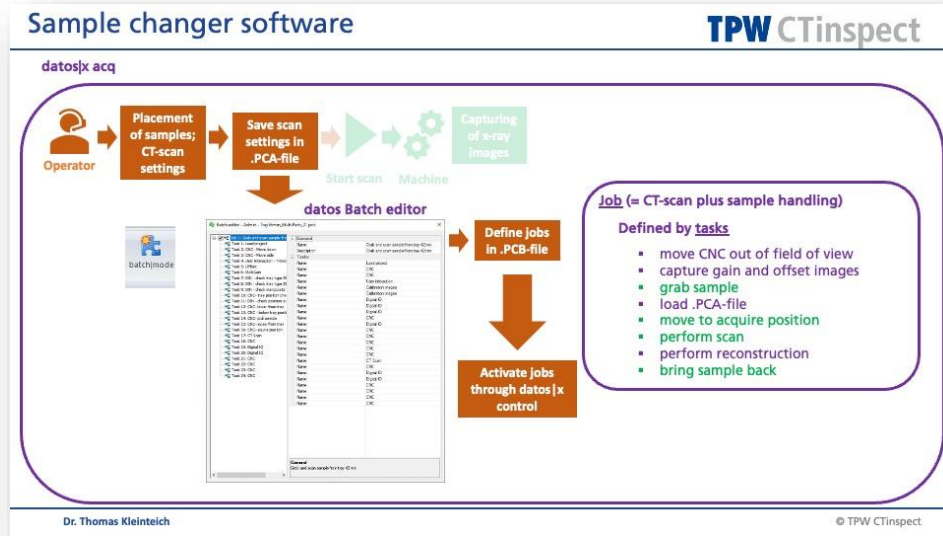
Job defined in .PCB file

Job defined in .PCB file

Job defined in .PCB file

Job defined in .PCB file

Job defined in .PCB file



Job (= CT-scan plus sample handling)

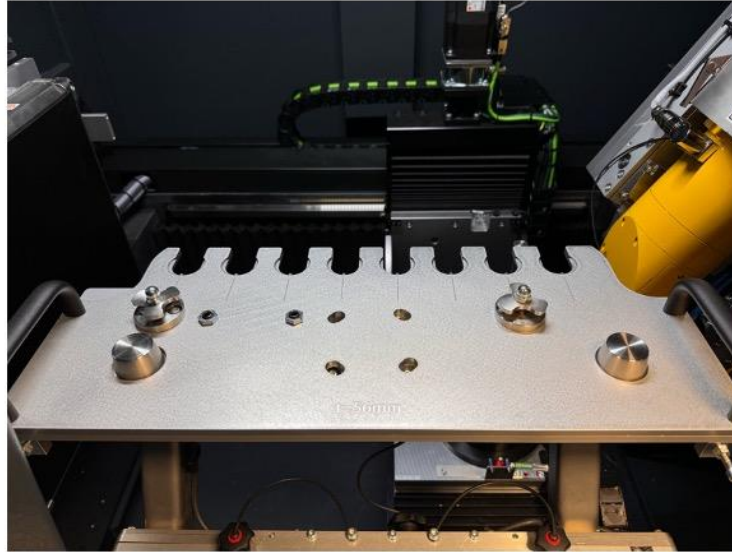
Defined by tasks

- move CNC out of field of view
- capture gain and offset images
- grab sample
- load .PCA-file
- move to acquire position
- perform scan
- perform reconstruction
- bring sample back

Scan parameters

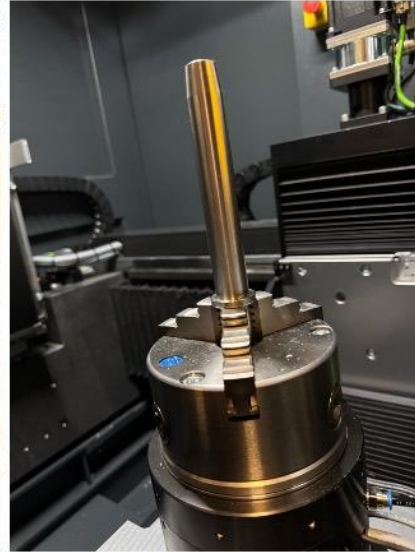
- FDD and FOD (z-axis)
- Height (y-axis)
- X-ray settings
- Exposure time
- Detector sensitivity
- Number of images
- etc.

Sample changer hardware



Dr. Thomas Kleinteich

TPW CTinspect

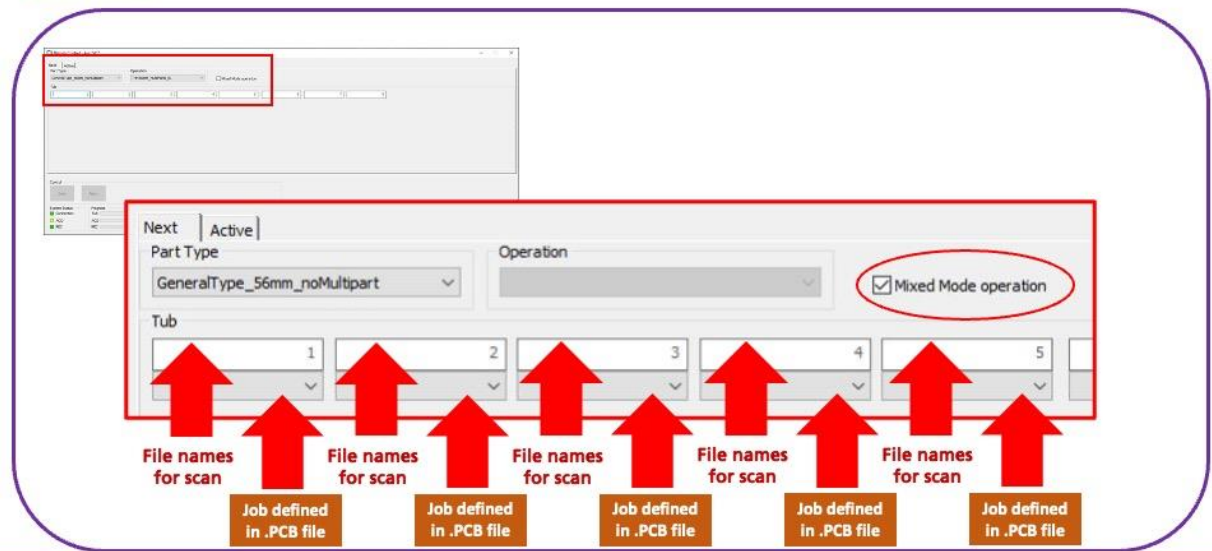


© TPW CTinspect

Sample changer software

TPW CTinspect

datos|x control



Dr. Thomas Kleinteich

© TPW CTinspect



Different .PCB-files with different jobs link to different .PCA-files

→ Allows to automatically scan very different samples

→ Usefull for all kinds of projects


Is it a lot of work to set-up multiple .PCB files / jobs?

No! It takes not more effort than setting up individual scans.

Is it a lot of work to set-up multiple .PCB files / jobs?

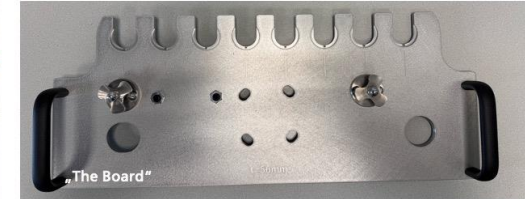
No! It takes not more effort than setting up individual scans.

„The Board“ has 8 positions → 8 very generic .PCB-files

 load PCA – perform detector calibration – move sample to acquire position – perform scan

Sample changer hardware

TPW CTinspect

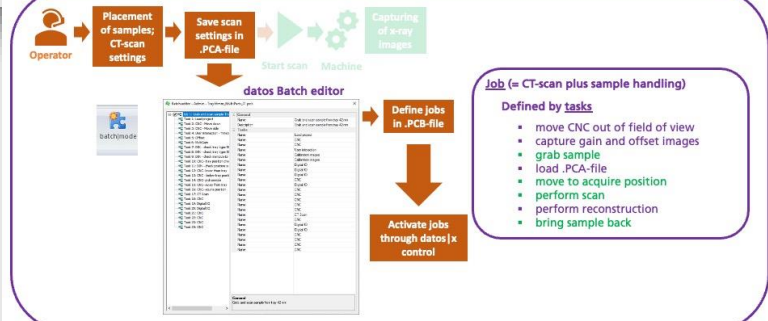


Dr. Thomas Kleinteich

Sample changer software

TPW CTinspect

datos|x acq




Dr. Thomas Kleinteich

© TPW CTinspect

Is it a lot of work to set-up multiple .PCB files / jobs?

No! It takes not more effort than setting up individual scans.

„The Board“ has 8 positions → 8 very generic .PCB-files

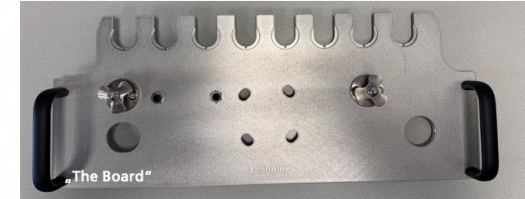
 load PCA – perform detector calibration – move sample to acquire position – perform scan



Operator:

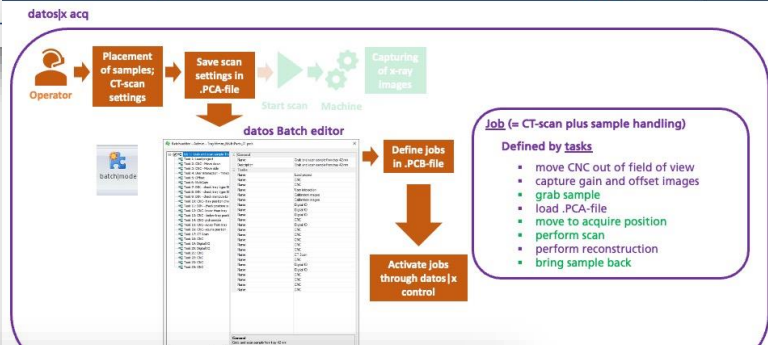
- places samples in cups / customized holders
- creates .PCA files with part-specific scan settings
- links .PCA-files in .PCB-files
- updates path for offset and gain images
- enters file names in datos|x control and selects .PCB-files

Sample changer hardware TPW CTinspect



Dr. Thomas Kleinteich

Sample changer software TPW CTinspect



© TPW CTinspect

Sample changer software TPW CTinspect




Dr. Thomas Kleinteich

© TPW CTinspect

Is it a lot of work to set-up multiple .PCB files / jobs?

No! It takes not more effort than setting up individual scans.

„The Board“ has 8 positions → 8 very generic .PCB-files

 load PCA – perform detector calibration – move sample to acquire position – perform scan



Operator:

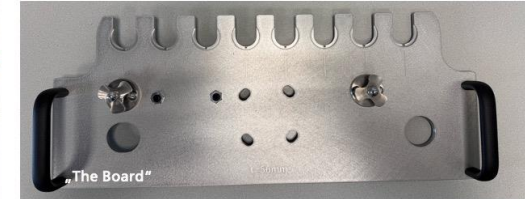
- places samples in cups / customized holders
- creates .PCA files with part-specific scan settings



< 10 mins.

- links .PCA-files in .PCB-files
- updates path for offset and gain images
- enters file names in datos|x control and selects .PCB-files

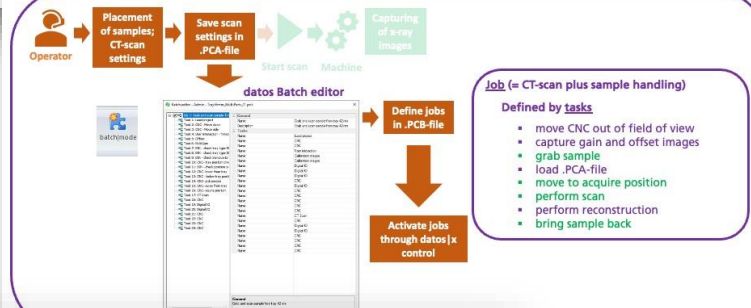
Sample changer hardware TPW CTinspect



Dr. Thomas Kleinteich

Sample changer software TPW CTinspect

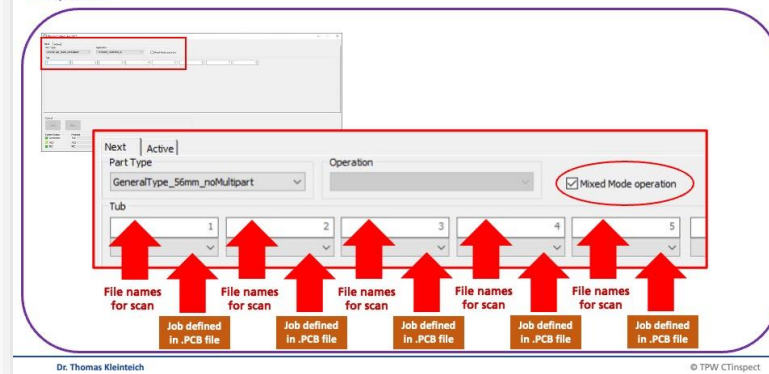
datos|x acq



© TPW CTinspect

Sample changer software TPW CTinspect

datos|x control



Dr. Thomas Kleinteich

© TPW CTinspect

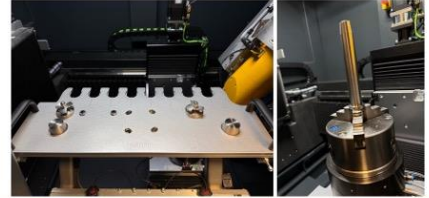
Sample changer works well for serial inspections

Integration of reconstruction and VGSTUDIO MAX data processing

- fully automated workflows from scan to PDF report


Sample changer software **TPW CTinspect**

Sample changer hardware **TPW CTinspect**



Dr. Thomas Kleinteich © TPW CTinspect

Sample changer software **TPW CTinspect**



Dr. Thomas Kleinteich © TPW CTinspect

Usefull for inspections of multiple similar parts

Possible to define multiple jobs in single .PCB → stack parts in sample holder and scan them separately

Link VGSTUDIO MAX makros to reconstruction output → fully automated workflows

Dr. Thomas Kleinteich © TPW CTinspect

Sample changer works well for serial inspections

Integration of reconstruction and VGSTUDIO MAX data processing

- fully automated workflows from scan to PDF report

„Mixed mode“ changed the way we operate the machine

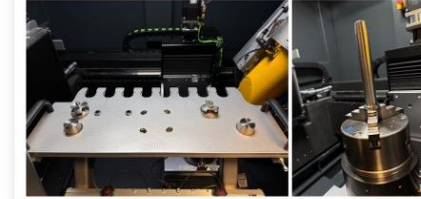
- instead of setting scans up on the pace of CT-scanning process, we do it as batches
- machine runs for several hours without interaction
- less disruption for operator
- machine down-times reduced to a minimum

Sample changer software

TPW CTinspect

Sample changer hardware

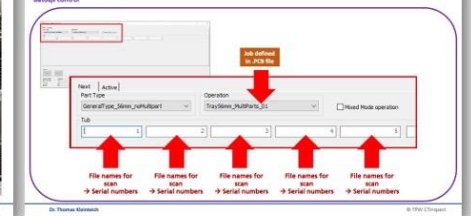
TPW CTinspect



Dr. Thomas Kleinteich

Sample changer software

TPW CTinspect



Useful for inspections of multiple similar parts

Possible to define multiple jobs in single .PCB → stack parts in sample holder and scan them separately

Link VGSTUDIO MAX makros to reconstruction output → fully automated workflows

Dr. Thomas Kleinteich

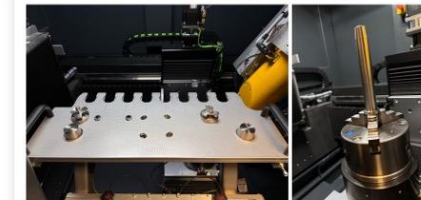
© TPW CTinspect

Sample changer software

TPW CTinspect

Sample changer hardware

TPW CTinspect



Dr. Thomas Kleinteich

Sample changer software

TPW CTinspect



Different .PCB-files with different jobs link to different .PCA-files

→ Allows to automatically scan very different samples

→ Useful for all kinds of projects

Dr. Thomas Kleinteich

© TPW CTinspect

Thank you!

Dr. Thomas Kleinteich
TPW CTinspect GmbH
Xantener Straße 6
41460 Neuss, Germany

Phone: +49 2131 6655 266
Cell: +49 163 6655 200

Email: t.kleinteich@ct-inspect.de

www.ct-inspect.de